

doughboy® POOL ASSEMBLY AND INSTALLATION INSTRUCTIONS

BUTTRESS SUPPORT AND STRAP SUPPORT OVAL POOLS

THINK "SAFETY FIRST"
Safe and correct use of your new Doughboy pool means swimming and wading only. DO NOT DIVE OR JUMP! The above-ground pool is not designed for these activities!

INSTALLATION
Installation of a Doughboy pool is not very hard, but it is a big job. The job will be easier if two or three friends help with the installation. Follow all instructions exactly. Your pool warranty is void if pool assembly and installation instructions are not followed 100%. Read all instructions provided with accessories such as filter, pump, skimmer, etc. prior to starting. Plan 2-3 days for pool assembly and installation. Avoid windy days. Before you start, check to see that you have the correct number of parts. Use your Parts List, which is broken down by carton. Do not throw away any of the inspection slips or cartons until you are sure you have all the parts. Your dealer will promptly replace any missing parts. The warranty is void if the design of the pool is altered in any way. No changes may be made to any of the parts. The pool must be assembled according to Doughboy's instructions. You must be completely satisfied with the completed pool installation, whether self-installed or professionally installed, before proceeding with additional landscaping.

CONTRACT INSTALLATION
Doughboy Recreational is in no way affiliated with any professional pool installer. Therefore, Doughboy can assume no responsibility for errors in installation by the homeowner or said professional installer. If you have the pool installed by others, please supervise to be sure they comply with proper installation techniques as shown.

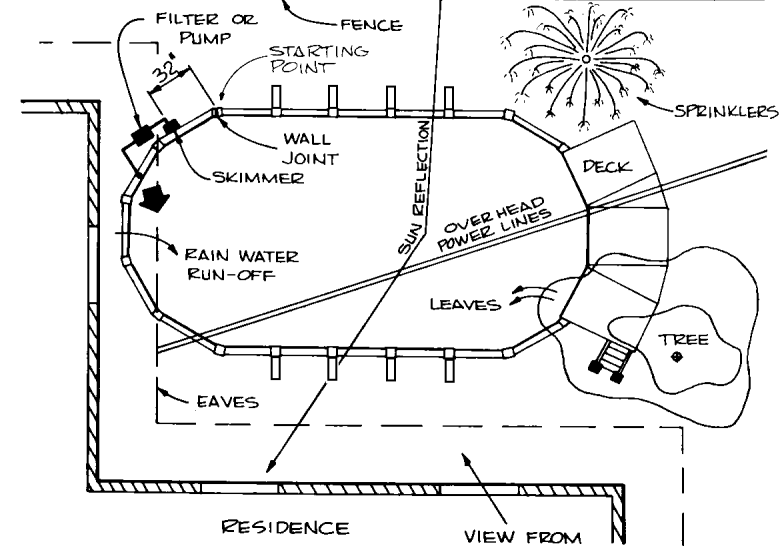
LOCAL CODES
Check to see if building permits or utility clearances are required. Obey all safety codes for fencing and all electrical codes.

SPECIAL CARE
Doughboy pools are designed to exceed industry recommended safety factors. However, special care must be taken with certain installation procedures that the installer performs and controls.

- 1) Framework must be level** - The entire pool framework must sit on flat ground with opposite sides no more than 1 inch out of level. There can be no low or high spots in the pool area. Steps 2 and 15 tell you how to check to be sure the pool framework is level. Patio block installation under end verticals is optional, but recommended. A pool that is not level produces stress that could result in pool wall failure (see "Installation Cautions").
- 2) Wall joint and joint piece** - This is where the wall joints together. Damage to the wall joint or joint piece reduces the safety factor and can result in a weak installation. Follow instructions using extreme care.
- 3) Cove** - The cove keeps the liner from creeping out from under the pool wall. Follow instructions carefully. Don't shortcut or substitute materials. Do not use materials that will shift. Improperly installed pools can rupture, allowing thousands of gallons of water to rush out and cause extensive property damage and personal injury.
- 4) Set up pool on soil surface.** Doughboy pools are not designed to be buried. Outside ground forces can collapse the pool wall.
- 5) External Support (buttress oval only)** - The excavation and use of 8" x 8" x 16" concrete blocks (Steps 5 and 6) to reinforce the side supports is a critical structural detail which cannot be varied from instruction. These blocks and the firm undisturbed soil under and around them become the load bearing components for the forces on the pool sides. DO NOT substitute other building materials for the concrete blocks.

External Support (strap oval only) - The excavation and use of 12" x 12" patio blocks (Steps 10, 11 and 12) to reinforce the side supports is a critical structural detail which cannot be varied from instruction. These blocks and the firm undisturbed soil under and around them become the load bearing components for the forces on the pool sides. DO NOT substitute other building materials for the patio blocks.

HOW TO USE THESE INSTRUCTIONS
This installation sheet covers the 6" top rail buttress oval pools and the 6" top rail strap oval pools. With the aid of your Parts List, select your pool's side support system. Your pool cannot be excavated for a deep swimming area if you have the strap support configuration.

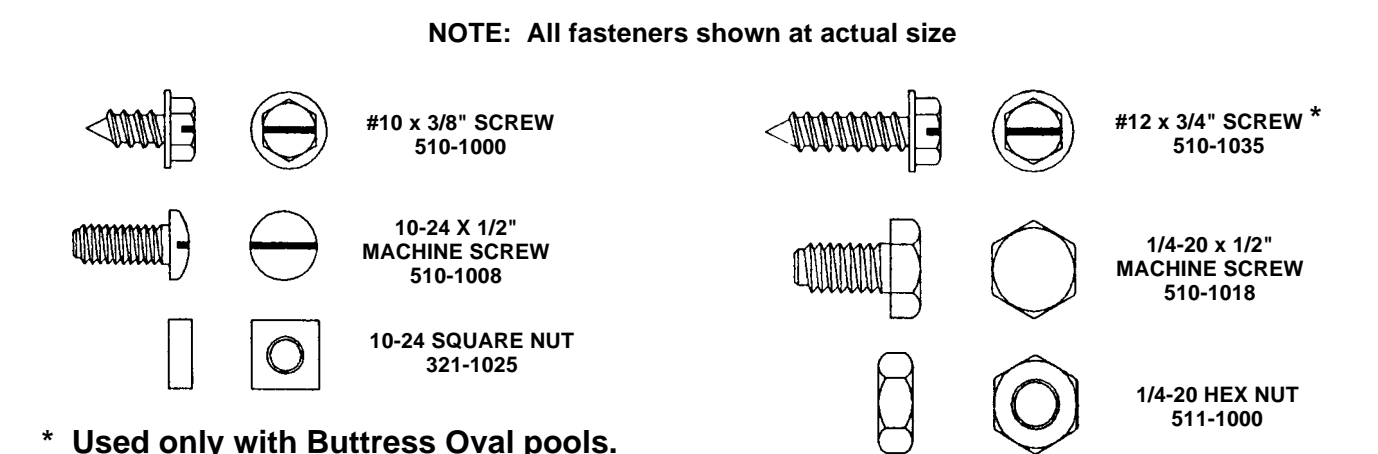


PRELIMINARY PLANNING

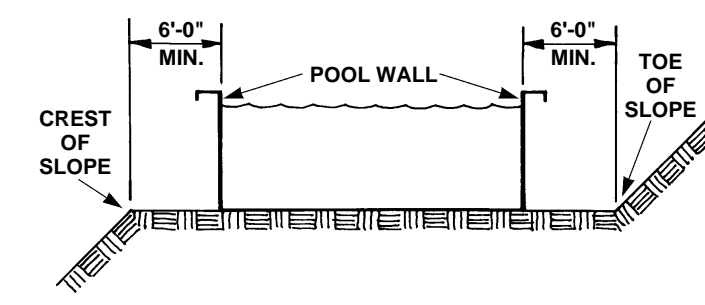
- IMPORTANT: Before beginning your pool installation, take a few minutes to consider the following points:**
1. Check wall clearances to allow enough working area for your pool installation.
 2. Check for easements.
 3. Avoid trees and roots; do not allow leaves to fall into the pool.
 4. Avoid overhead power lines.
 5. Avoid underground piping and cables.
 6. Keep sprinklers away from pool sides.
 7. Select a pool site that allows for the proper supervision of swimmers as well as viewing children near the pool.
 8. Position the pump and filter near convenient electrical outlets.
 9. Avoid overhanging eaves to prevent water and debris runoff from your roof.
 10. Allow 12 inches of undisturbed soil around your pool (clearance radius).
 11. No sudden slopes within 6 feet of your pool.
 12. Do not install your pool on any abrasive area such as concrete, asphalt, peat moss, tar paper, gravel, wood, top of grass or on soil which has recently undergone petroleum based fungicide (available at garden supply shops). This may help prevent fungus stains on the liner. Consult your Doughboy pool dealer.
 13. Do not install liner on nut grass or Bermuda grass. See your dealer for special instructions.
 14. Rid pool area of burrowing pests and insects such as gophers and termites.
 15. Avoid windy days during installation.
 16. Have 2 or 3 helpers to assist you during pool assembly.

- TOOLS AND MATERIALS REQUIRED**
- Materials Needed -**
- Nails - 2 1/2" Long (1 doz.)
 - 12" x 12" x 2" patio blocks - for strap support pool (1 for each side support - see pool layout)
 - 8" x 8" x 16" concrete blocks - for buttress support pool (2 for each side support - see pool layout)
 - Ball of heavy string
 - Binder clips - 1 1/4" - 2" size (Available at stationary supply stores)
 - 2" x 4" board (See Step 2 for length)
 - Duct tape (2" wide)
 - Wood stakes - 2" x 2" x 18" (approx. 12)
 - Enamel, fast drying (Not lacquer)
 - 12" x 12" x 2" patio blocks for the ends of pool - optional (See Step 15)
 - Preformed cove (see Step 25)
- Tools Required**
- 2 Carpenters level (Transit recommended)
 - Hammer
 - Flat end shovel
 - 5/16" Hex nut driver
 - 25" Tape measure
 - Garden rake
 - Tamping tool
 - Roller (if available)
 - Screwdriver, flat end (Large)
 - Carpenters saw
 - Felt tip marking pen
 - Two 7/16" wrenches - buttress pool only
 - Sifting screen (To remove 1/8" pebbles and larger)
 - Sharp knife or single edge razor blade
 - Pliers
 - Drill/Bit (See Step 2)
 - Small paint applicator (Q-Tip, cotton ball or match stick) to coat edges of skimmer and return openings in the metal wall

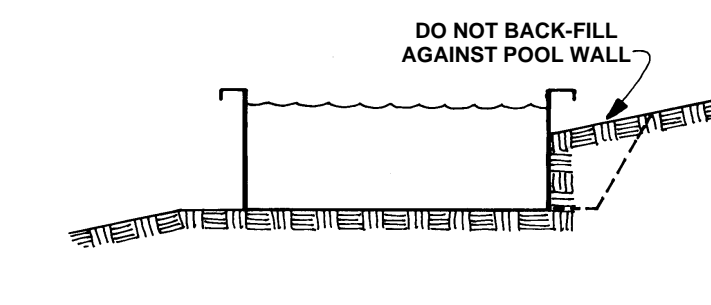
POOL FASTENER IDENTIFICATION



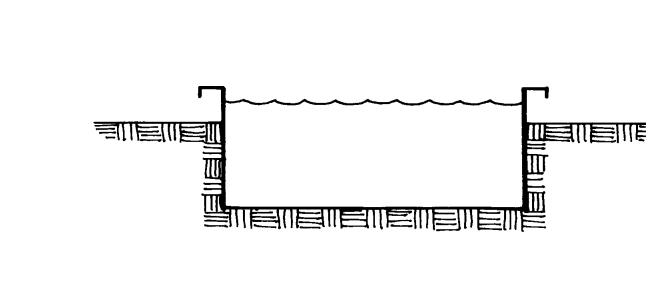
INSTALLATION CAUTIONS



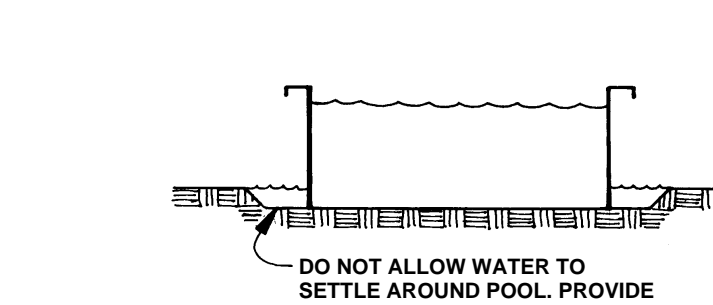
INSTALLATION NEAR SLOPES
A pool filled with water weighs many tons. If pool is installed too close to the "Crest" of a slope, the poolwater weight could cause the ground to give way. The pool can rupture, allowing thousands of gallons of water to rush out and cause extensive property damage and personal injury. Consult with local building department. If pool is installed too close to the "Toe" of a slope, outside collapsing ground forces can collapse the pool wall.



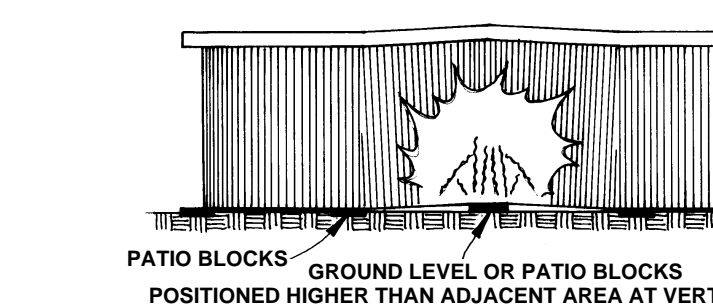
DO NOT BACKFILL AGAINST POOL WALL
Back-filling against the pool wall can cause outside ground forces to collapse the pool. Some soils are highly aggressive and will corrode the pool components, resulting in pool failure. Keep pool exterior clear of soils and other materials around its entire perimeter. Provide good drainage away from pool.



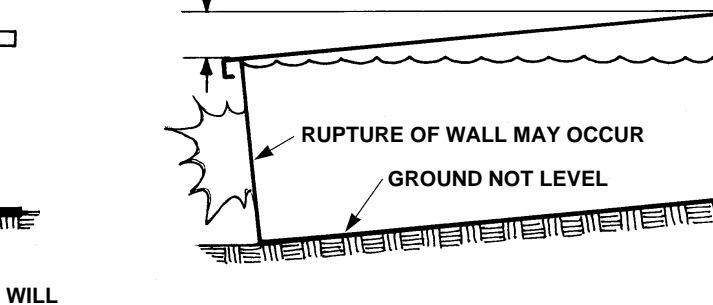
DO NOT BURY POOL
Burying a pool in the ground above the bottom rails will cause aggressive soils to corrode the pool components. Deep burial of pool into the ground can cause outside ground forces to collapse the pool. Pool must be installed on top of the ground with good drainage away from pool.



PROVIDE GOOD DRAINAGE
Prevent run-off rain water and general yard watering from settling against the pool frame and wall to prevent corrosion and unsightly crustation build-up on the pool components. Provide good drainage away from pool.



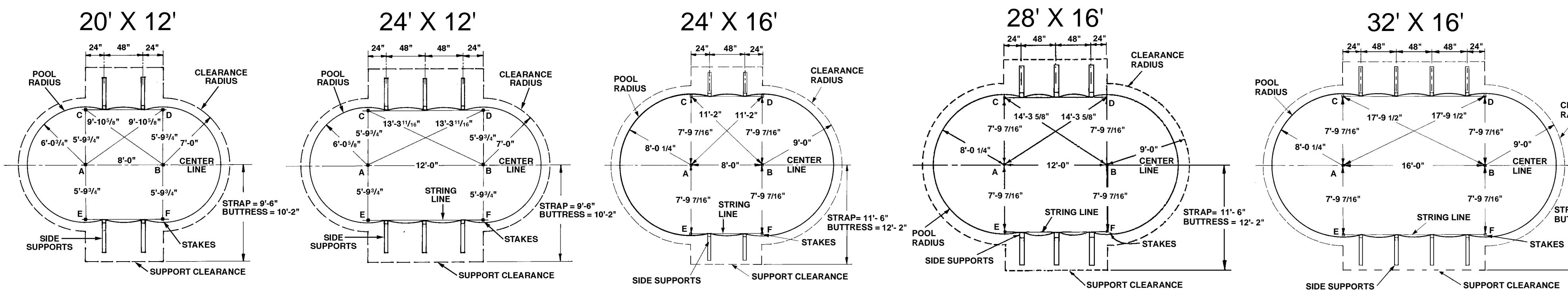
WALL WRINKLING
Prevent wrinkling of the pool wall during installation by checking and rechecking the levelness of the ground and patio blocks at each end vertical (Steps 2 and 19). If one block is higher than those positioned at each side, wrinkling of the wall will occur when wall is installed.



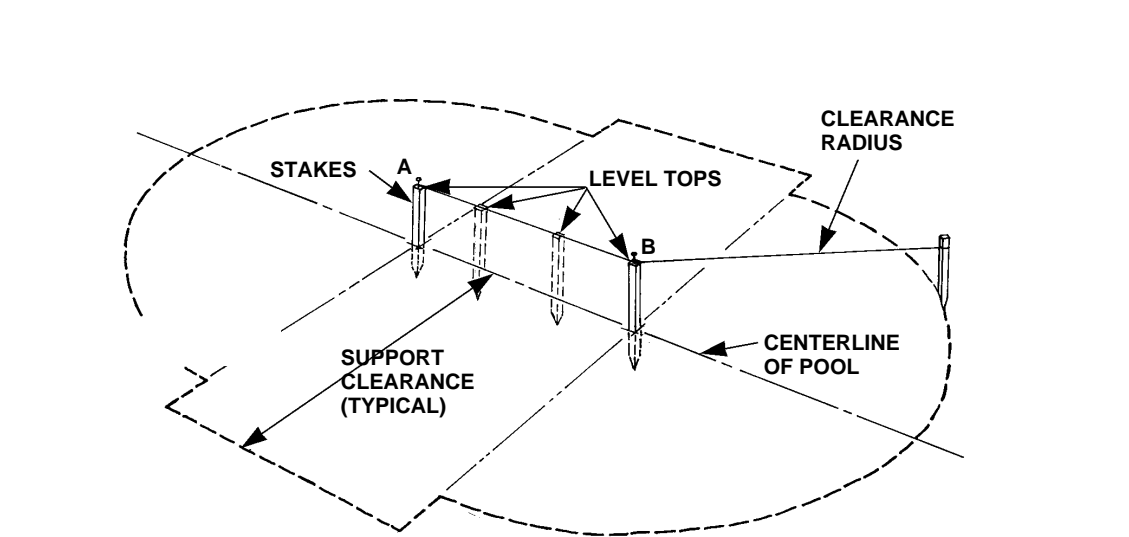
TILTED POOL
If the ground level slopes in any direction more than 1" from one side to the other or 1" from one end to the other, the wall may rupture causing extensive property damage and personal injury. Follow Step 2 carefully, rechecking levelness of ground before proceeding to next step.

POOL LAYOUT DIMENSIONS

Numbers across the top represent the five sizes of Doughboy 6" strap and buttress above-ground family pools. Below each size is a layout of that pool showing the dimensions, indicated by a solid line, and clearance radius (see Step 1) which is required for external pool parts. If deep end excavation is desired, additional layout dimensions are given in Step 3. Be sure to read "Preliminary Planning" before starting installation.

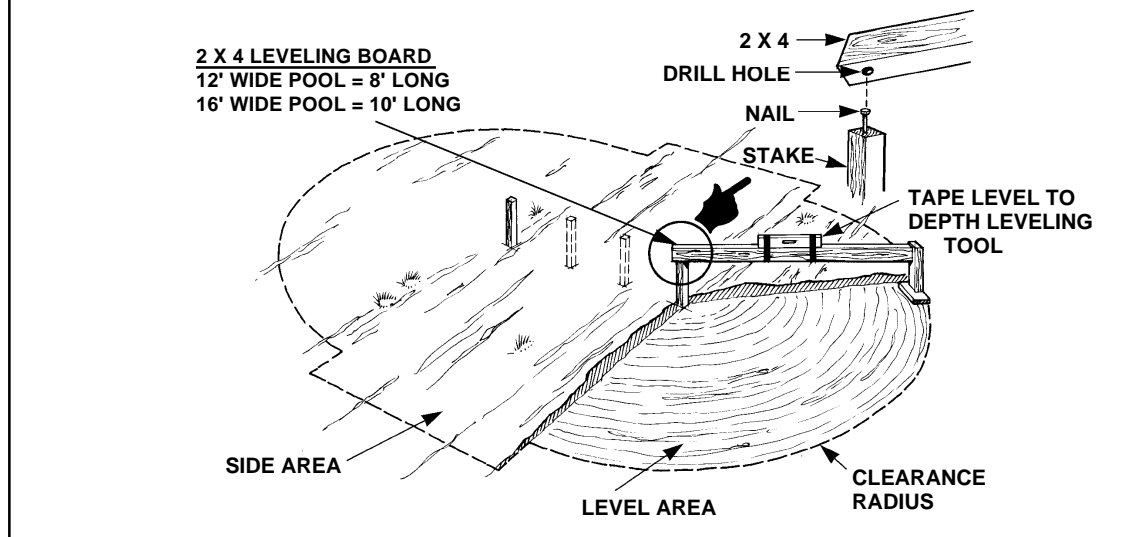


1 POOL LAYOUT



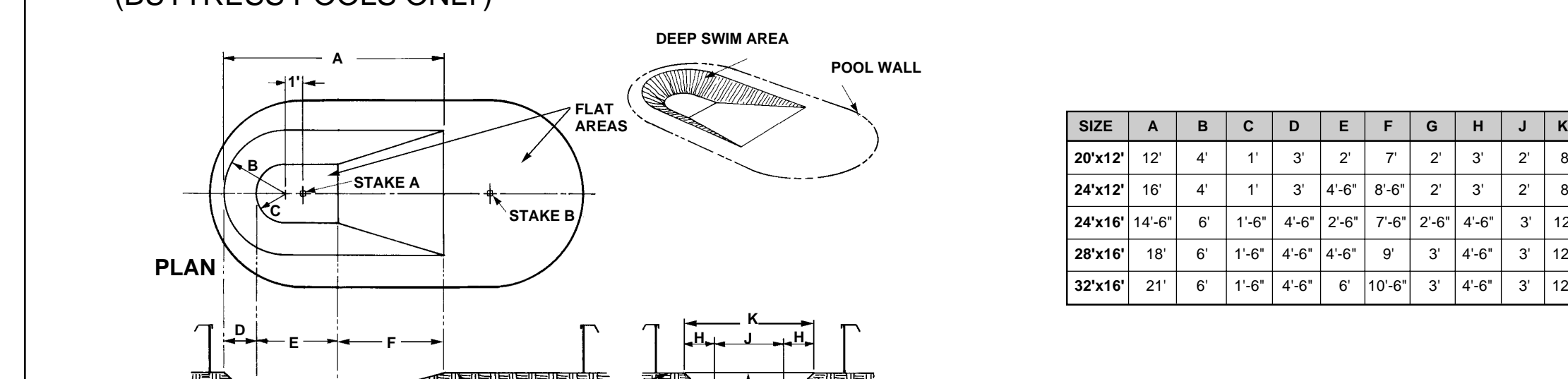
Refer to Pool Layout Dimensions for your pool size. Locate stakes A and B. Level tops with long 2' x 4" board and carpenter's level. Layout clearances as shown.

2 GROUND LEVELING



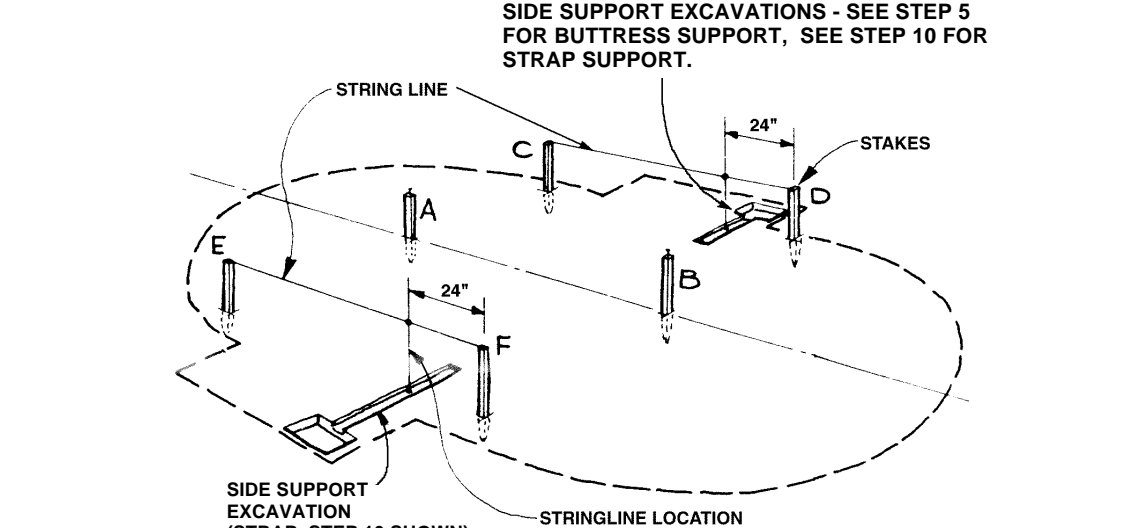
With a shovel and the constructed depth leveling tool shown above, remove sod and level pool area. Level to the lowest spot within pool area. Level side areas to main pool area. Remove high points - do not fill in low spots. Ground must always be firm. Be sure pool area is free of stones, sticks, roots and other objects that could puncture liner. Remember: The entire assembled pool framework must sit on flat ground within 1 inch of level at opposite sides. Spend additional time now to avoid disassembly later.

3 OPTIONAL SPECIAL PURPOSE DEEP SWIMMING AREA (BUTTRESS POOLS ONLY)



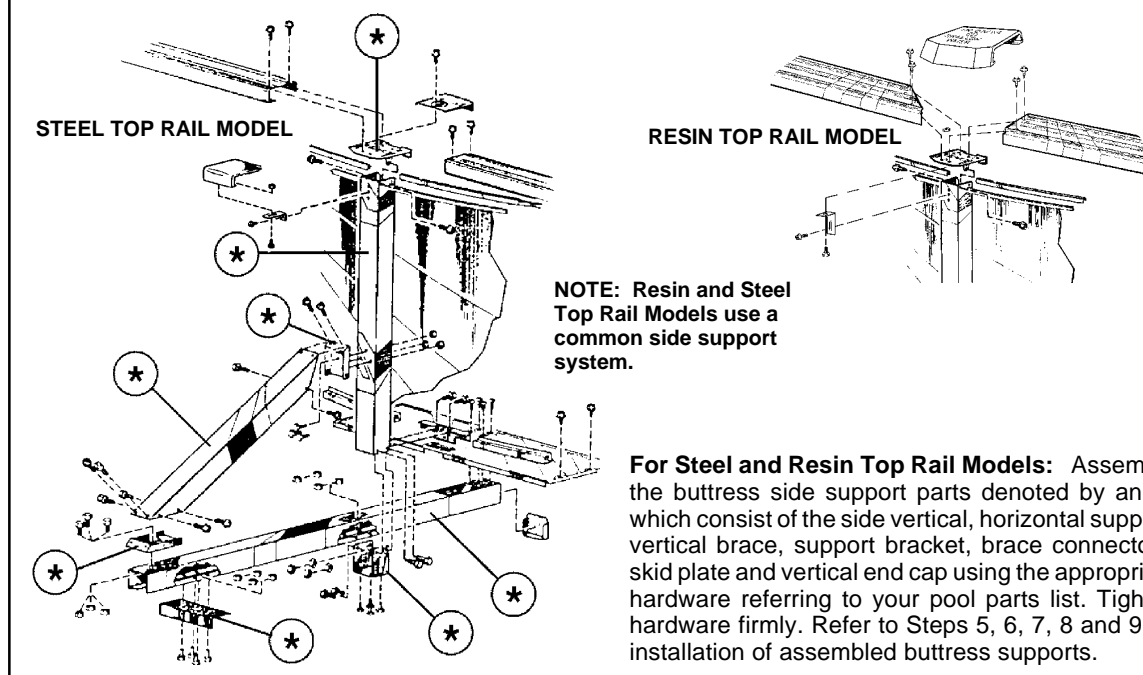
You may decide to excavate a deep swimming area as shown above. The Deep Swimming Area is for underwater swimming only, NO DIVING, NO JUMPING. To excavate the deep swimming area, use the layout illustrations above, along with the measurements from the chart for your size pool.

4 STAKES AND STRING LINES

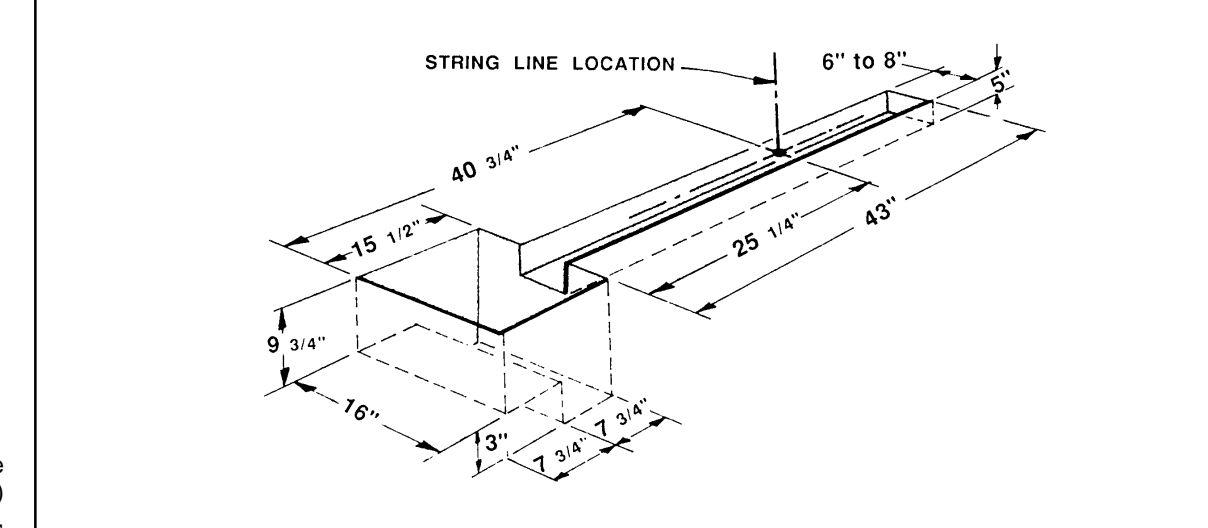


Locate Stakes C, D, E and F from your pool layout. Attach strings between C and D, then E and F. Locate center of two side support excavations as shown. Other supports will be located 48" on centers if you desire to excavate at this time. Proceed to Fig. A for buttress support pool or Fig. B for strap support pool.

FIG. A 6" BUTTRESS SIDE SUPPORT

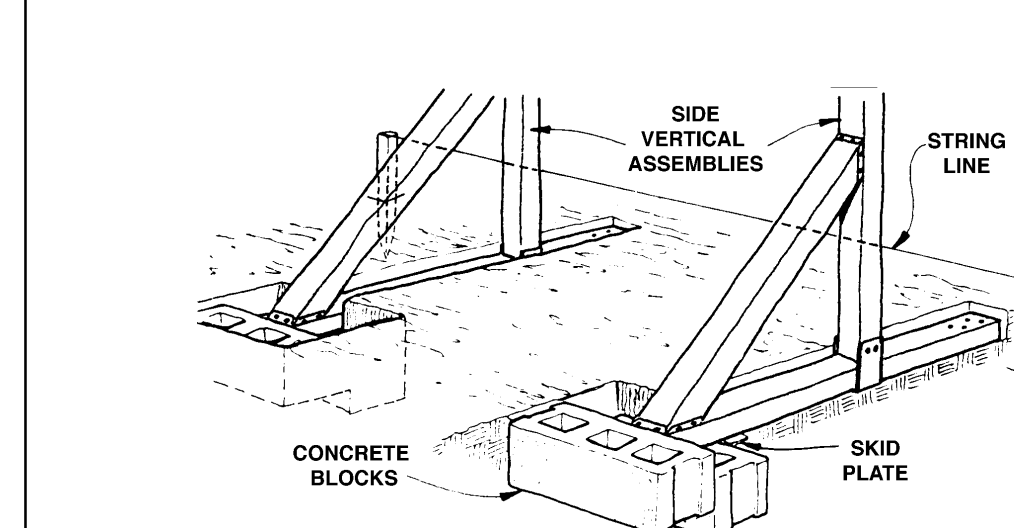


5 BUTTRESS SUPPORT EXCAVATION



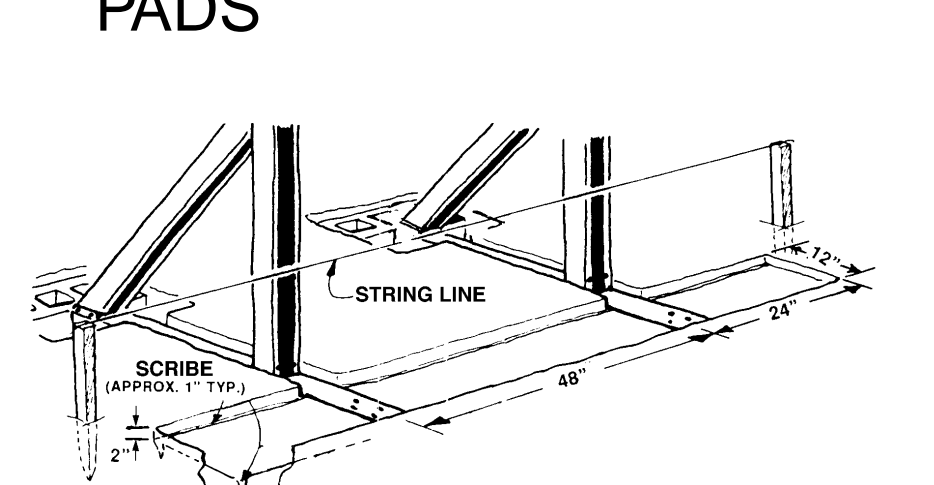
Carefully dig out side support trenches following dimensions above. Refer to Figure A and your Parts List to assemble vertical, horizontal beam, horizontal end cap, vertical brace, brace connectors, support bracket and skid plate. It is very important that the trench walls remain firm and undisturbed during and after excavation. DO NOT over-excavate with the thought of back-filling later as the side supports will move when pool is filled and pool failure may result.

6 INSTALL CONCRETE BLOCKS



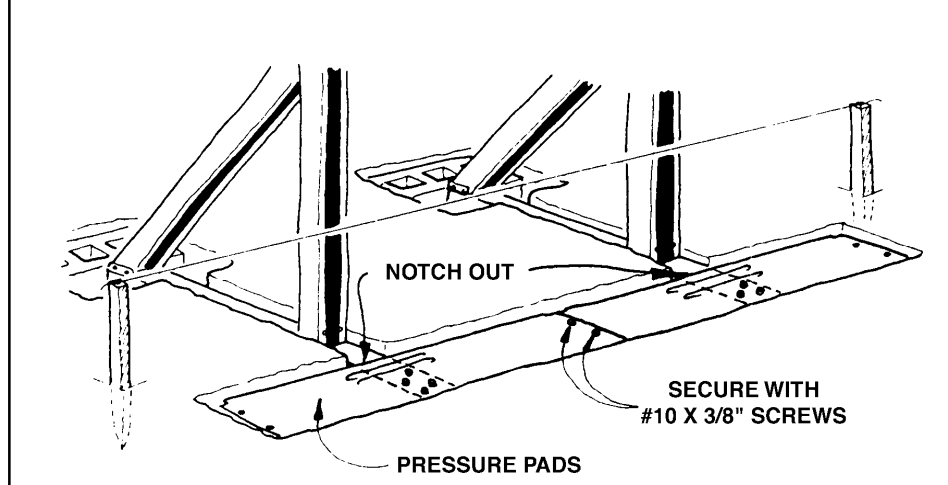
Place concrete blocks into excavation as shown. Place the assembled side support in each trench. Make sure the skid plate rests firmly against the face of the block, and vertical is just touching string line. Check each horizontal beam for levelness. If over-digging has been done, use only additional concrete blocks or patio blocks to fill.

7 DIG OUT FOR PRESSURE PADS



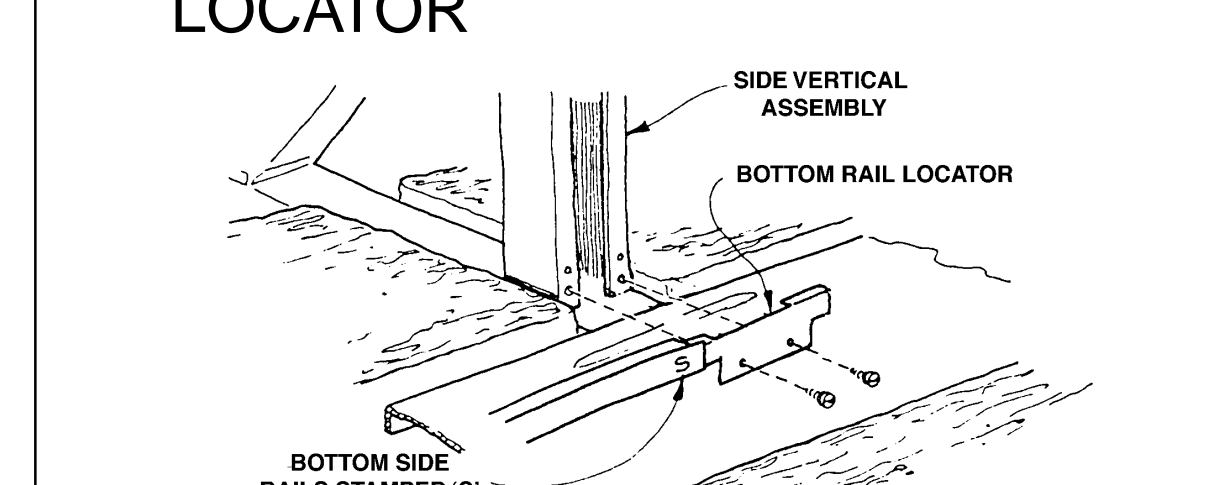
Dig a 2 inch deep trench to the dimensions shown above prior to installing pressure pads. Backfill around horizontal beams. Use a large screwdriver to scribe a groove (approx. 1 inch deep) down each side of the trench for flange clearance on pressure pads. Recheck level and position of side support assemblies.

8 INSTALL PRESSURE PADS



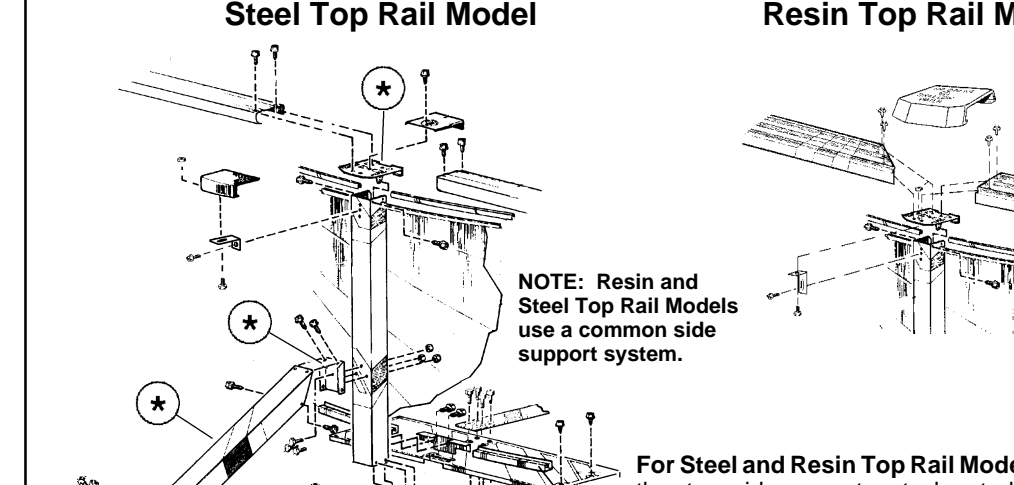
Place pressure pads into the trench you dug out. The flanges of the pressure pads should sit down into the scribes you made so the pressure pads will be flush with the top of the horizontal beams and firm ground. Secure with #12 x 3/4" screws through each pad and into each horizontal beam. Overlap and attach pressure pads to adjacent pads using #10 x 3/8" screws. Use all screws. DO NOT omit any.

9 INSTALL BOTTOM RAIL LOCATOR

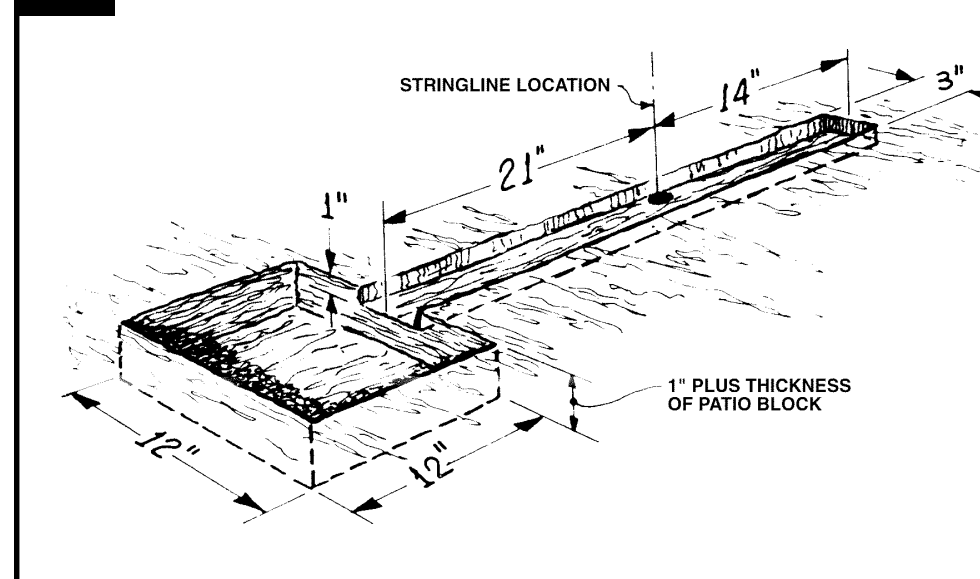


Loosely assemble bottom rails (stamped "S"), groove up, between verticals with bottom rail locators. Secure bottom rail locators to side verticals with screws. NOTE: Be sure to use the bottom set of holes in the side verticals when assembling the bottom rail locators. Proceed to Step 15.

FIG. B 6" STRAP SIDE SUPPORT

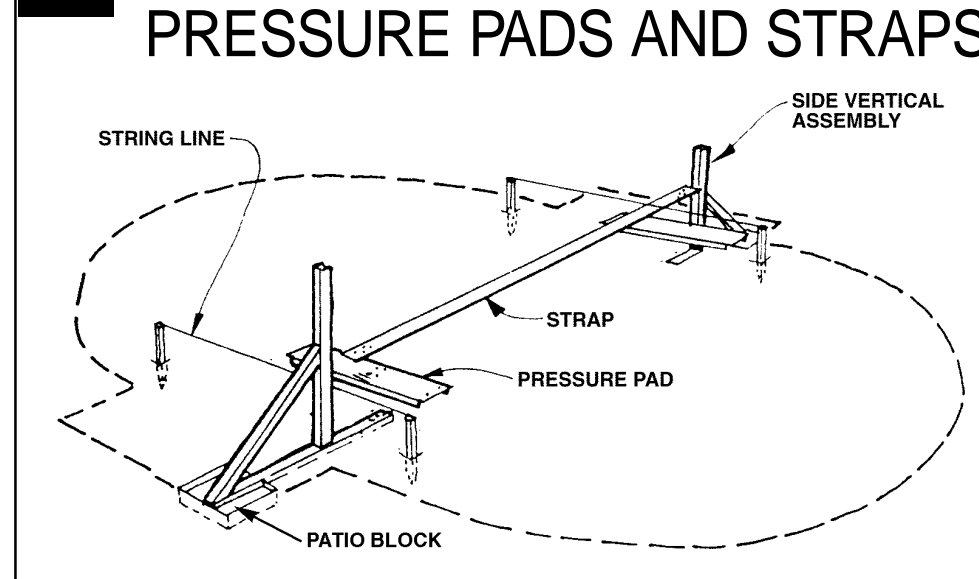


10 STRAP SUPPORT EXCAVATION



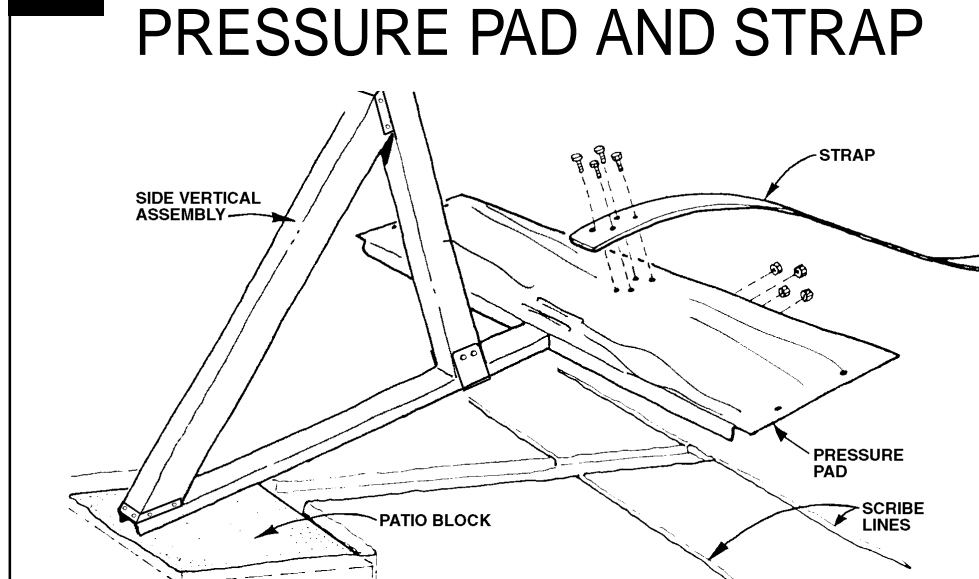
Carefully dig out side support trenches following dimensions above. It is very important that the trench walls remain firm and undisturbed during and after excavation. **DO NOT** over-excavate with the thought of back-filling later as the side supports will move when pool is filled and pool failure may result.

11 POSITION SIDE SUPPORT, PRESSURE PADS AND STRAPS



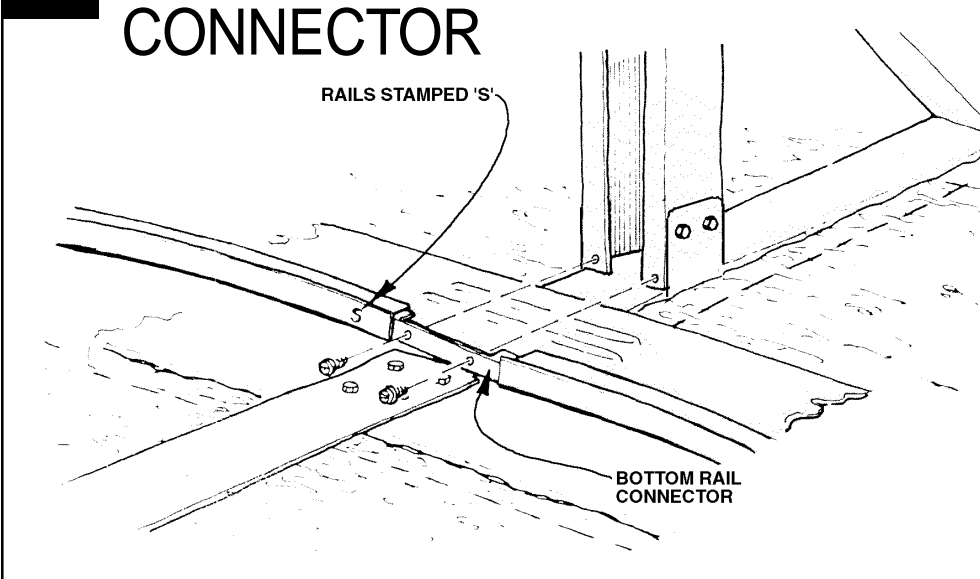
Place a patio block into rear of each excavation (see Step 12). Position side vertical assemblies, pressure pads and strap as shown. (Straighten out strap as flat as possible.)

12 ASSEMBLE SIDE SUPPORT, PRESSURE PAD AND STRAP



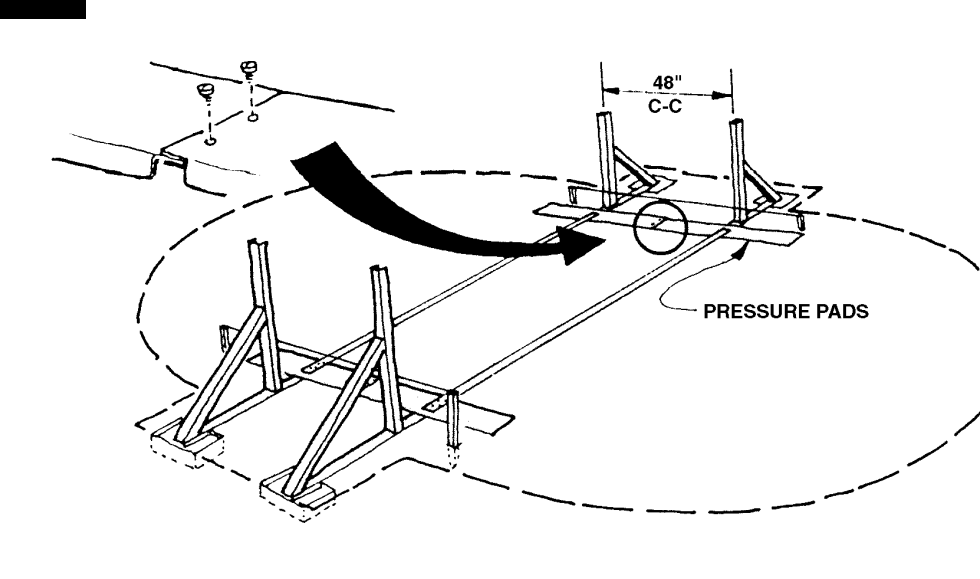
Using hardware provided, assemble strap and pressure pad to horizontal support beam. Using screwdriver, scribe into ground along pressure pad flanges until pressure pad surface is flush with ground. Repeat for opposite side.

13 ATTACH BOTTOM RAIL CONNECTOR



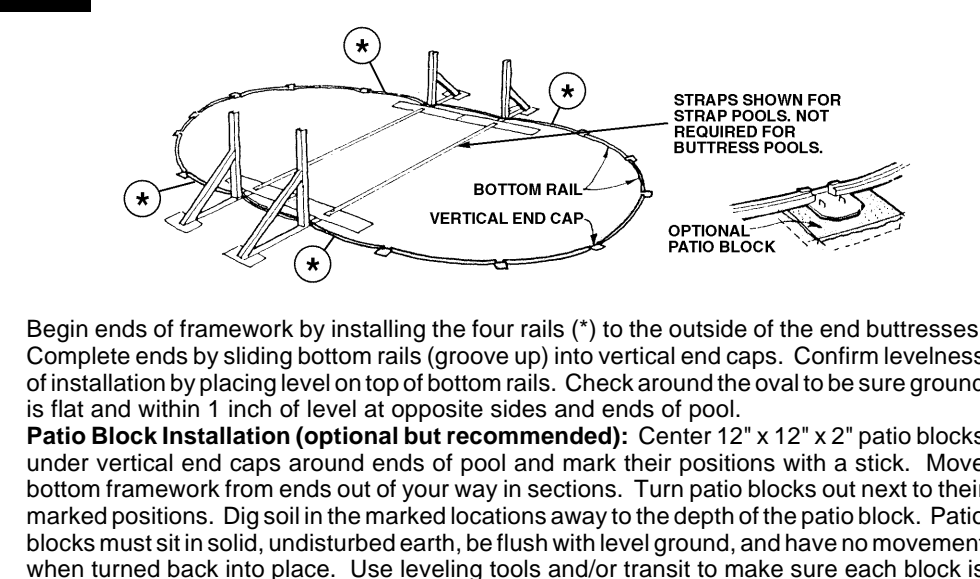
Loosely assemble bottom rails between verticals with bottom rail connectors. Secure as shown. NOTE: Bottom rails stamped "S" go between the strap side supports.

14 INSTALL REMAINING SUPPORTS



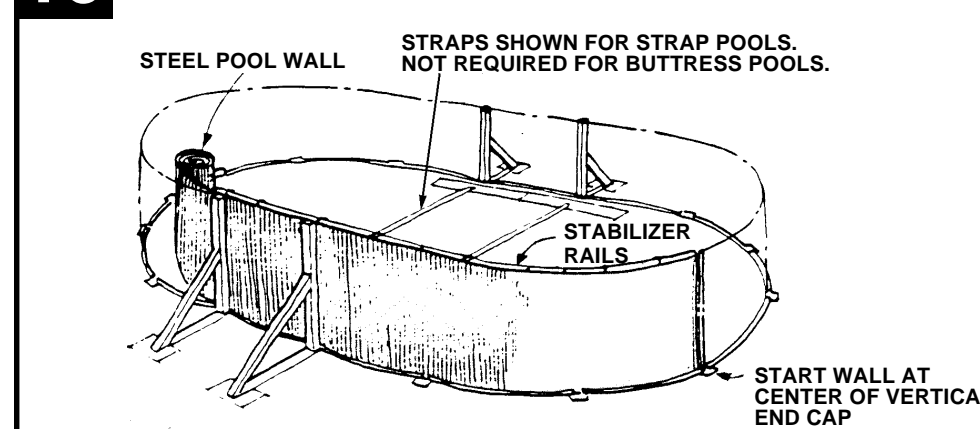
Repeat Steps 10 through 13 for assembly and installation of all side support assemblies. Overlap and attach the pressure pads as shown. Recheck level and position of side support assemblies.

15 INSTALL PATIO BLOCKS



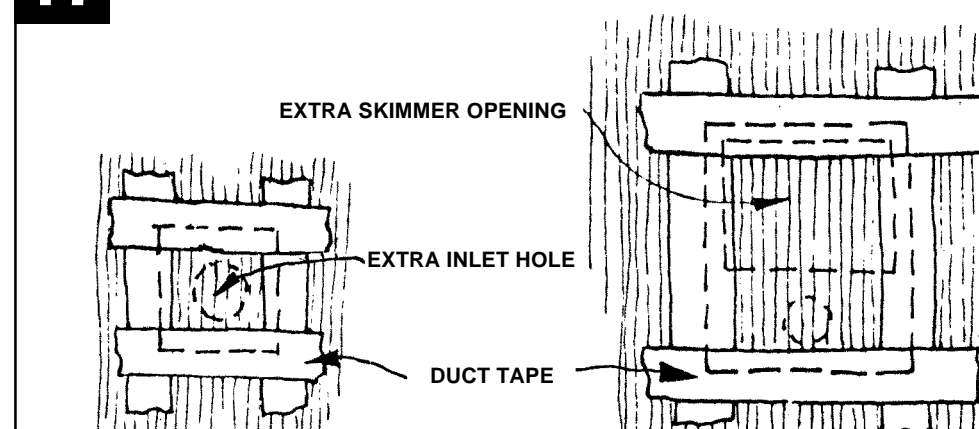
Begin ends of framework by installing the four rails (*) to the outside of the end buttresses. Complete ends by sliding bottom rails (groove up) into vertical end caps. Confirm levelness of installation by placing level on top of bottom rails. Check around the oval to be sure ground is flat and within 1 inch of level at opposite sides and ends of pool. **Patio Block Installation (optional but recommended):** Center 12" x 12" x 2" patio blocks under vertical end caps around ends of pool and mark their positions with a stick. Move bottom framework from ends out of your way in sections. Turn patio blocks out next to their marked positions. Dig soil in the marked locations away to the depth of the patio block. Patio blocks must sit in solid, undisturbed earth, be flush with level ground, and have no movement when turned back into place. Use leveling tools and/or transit to make sure each block is level and that all blocks are level to each other. NOTE: If you plan to use sifted earth for pool cover, (see Step 25) bring it into pool area at this time. Reinstall bottom framework. Check again for levelness, and to see that vertical end caps are centered on patio blocks. Remove all stakes. NOTE: If you will be installing a maindrain, refer to those instructions BEFORE installing pool wall.

16 INSTALL WALL



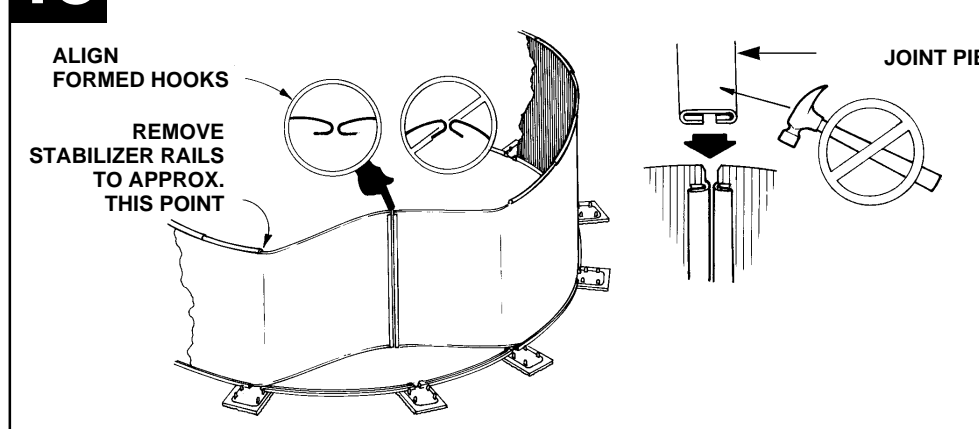
Remove pool wall from carton. Note "Up" arrow on wall. Keep hands and feet from under wall during construction. Determine starting point of wall from PRELIMINARY PLANNING. The skimmer opening will be at the inside end of the wall coil. For improved skimmer operation, position skimmer knockout downwind of prevailing winds. Always start wall at center of a vertical end cap. Uncoil about 6 to 10 feet of wall and insert bottom edge into groove in bottom rails. Place stabilizer rails on top edge of pool wall, working around top of pool as wall is inserted into bottom rails. Telescope small diameter rail into large diameter rail about 6 inches. Secure stabilizer rails to wall with duct tape between vertical end caps. See Step 18 for joint piece installation.

17 COAT OPENINGS



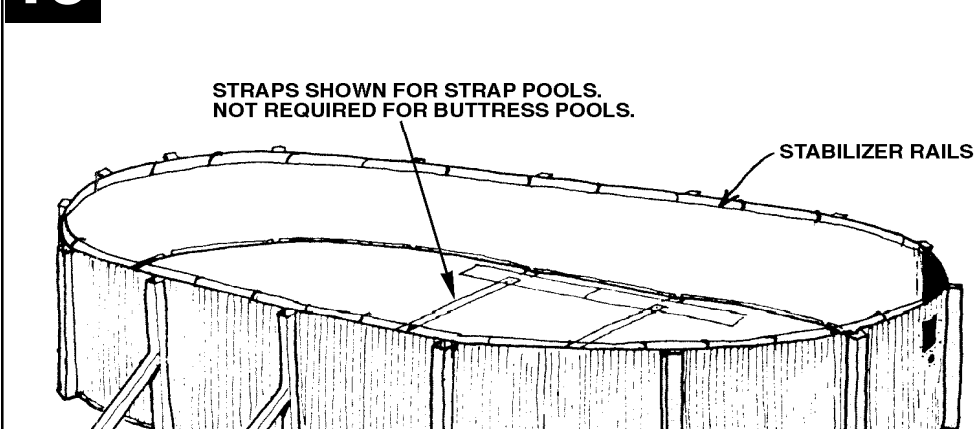
Matching pool wall cover plates are provided with pools that have two skimmer openings. Tape over the extra skimmer and return opening in the event you are only using one skimmer. Use a "Q-Tip" or cotton ball dipped in fast drying enamel to coat all bare metal edges of skimmer opening, return opening and mounting holes. This coating protects edges against corrosion. **DO NOT** use fingers as sharp edges may cause serious cuts. Enamel must dry prior to installing liner to prevent damage to liner in contact with freshly painted surfaces.

18 INSTALL WALL JOINT



Bring wall ends together in center of vertical end cap. Adjust all bottom rails in or out uniformly if wall ends do not meet. **DO NOT** make the total adjustments with one or two bottom rails. Remove stabilizer rails in area shown above. Bring pool wall ends inside of bottom rails as shown above. Align formed hooks on wall ends and slide on joint piece until they are even with top of formed hooks on wall. **WARNING: Do not hammer joint piece on! Damaged hooks or joint piece can lead to pool wall failure.** Manufacturer cannot assume responsibility for performance of this product if the joint piece has been improperly installed by forcing it on in any manner. If joint piece does not slide on easily, realign sidewall hooks. Use ordinary dish washing liquid for lubrication. When joint piece is in place, replace wall into bottom rails and reinstall stabilizer rails.

19 INSTALL VERTICALS



Carefully follow the details shown in Fig. C to assemble end verticals to pool. Use all necessary hardware.

FIG. C 6" STANDARD TOP RAIL (Steel)

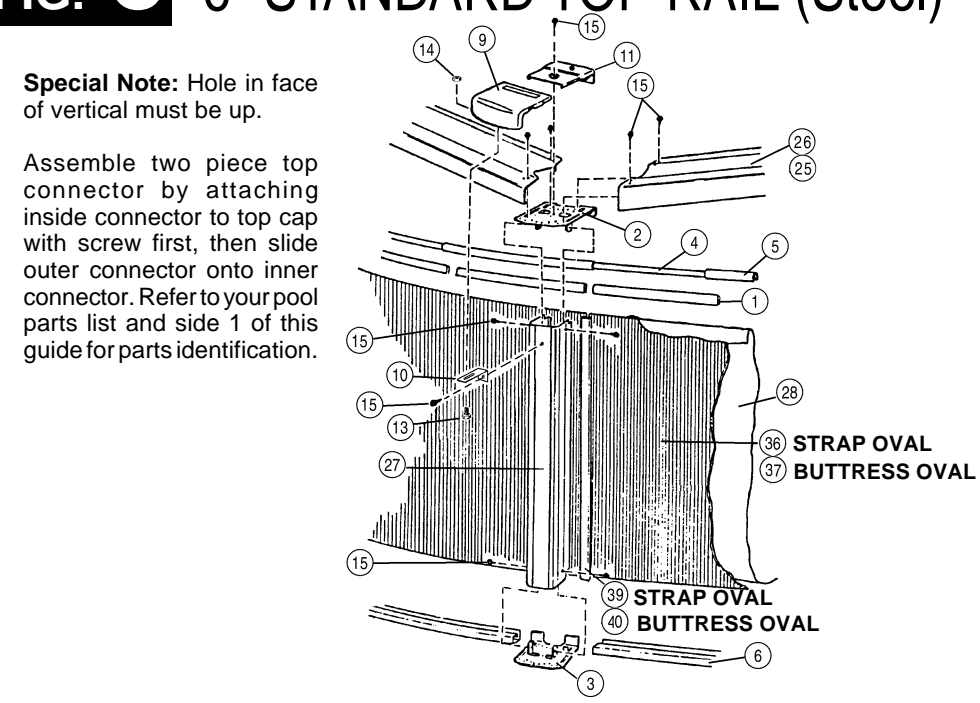
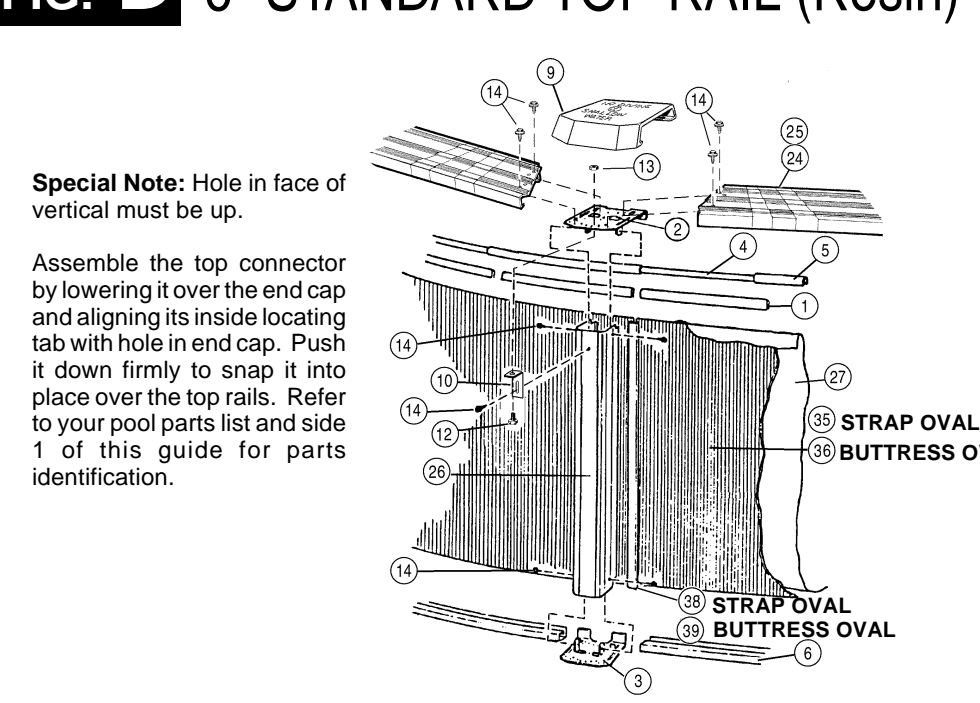
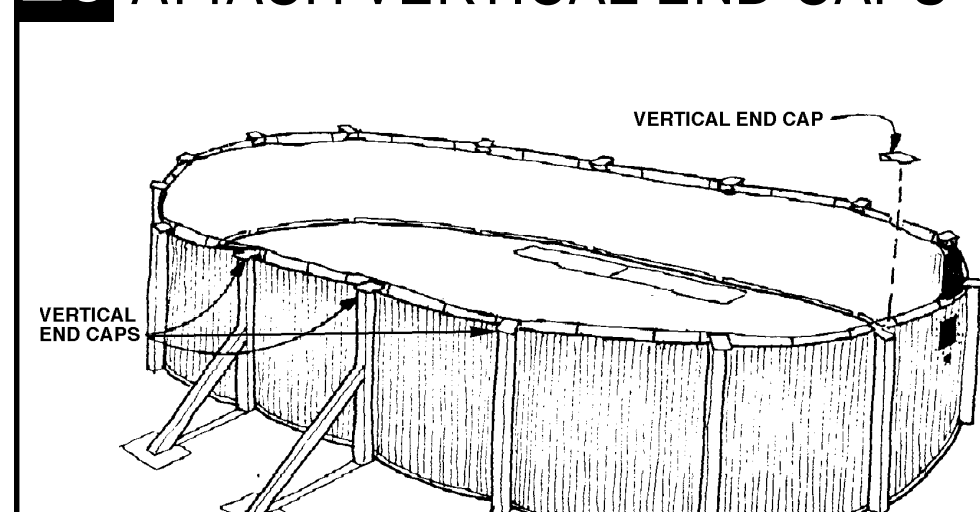


FIG. D 6" STANDARD TOP RAIL (Resin)

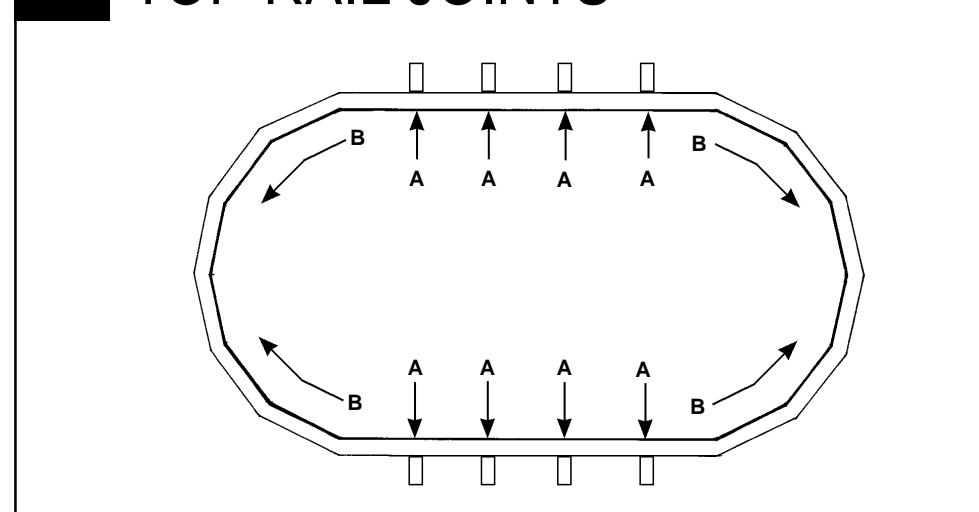


20 ATTACH VERTICAL END CAPS



Carefully follow Fig. C or D to attach vertical end caps to verticals. Remove stabilizer rail prior to installing each end cap.

21 TOP RAIL JOINTS

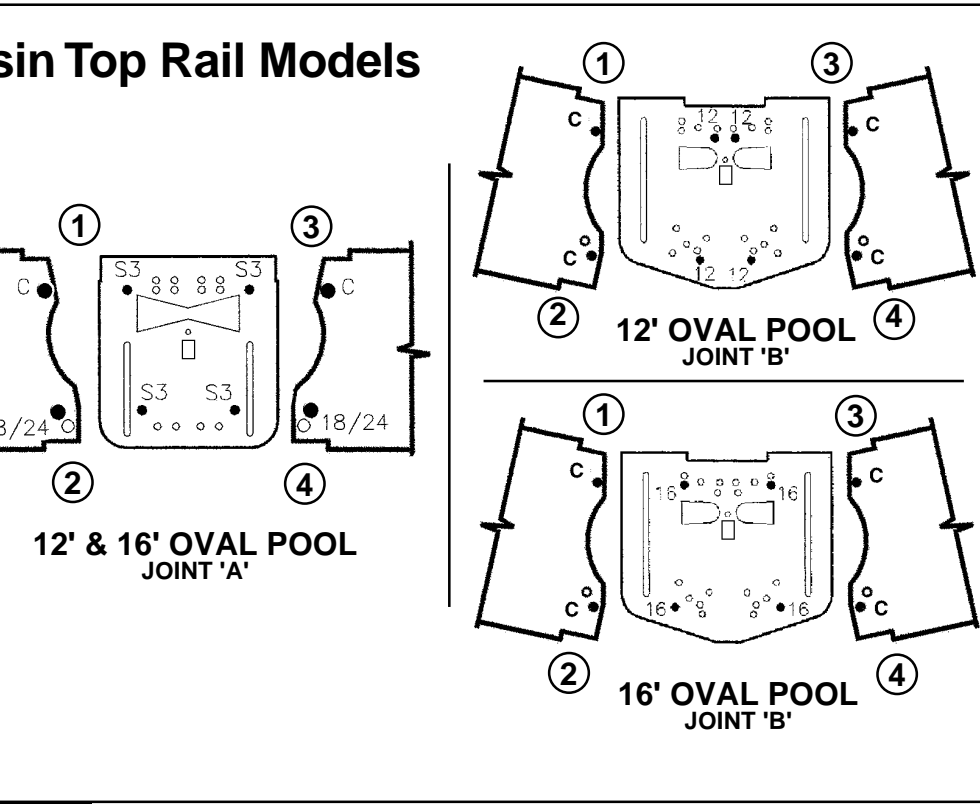
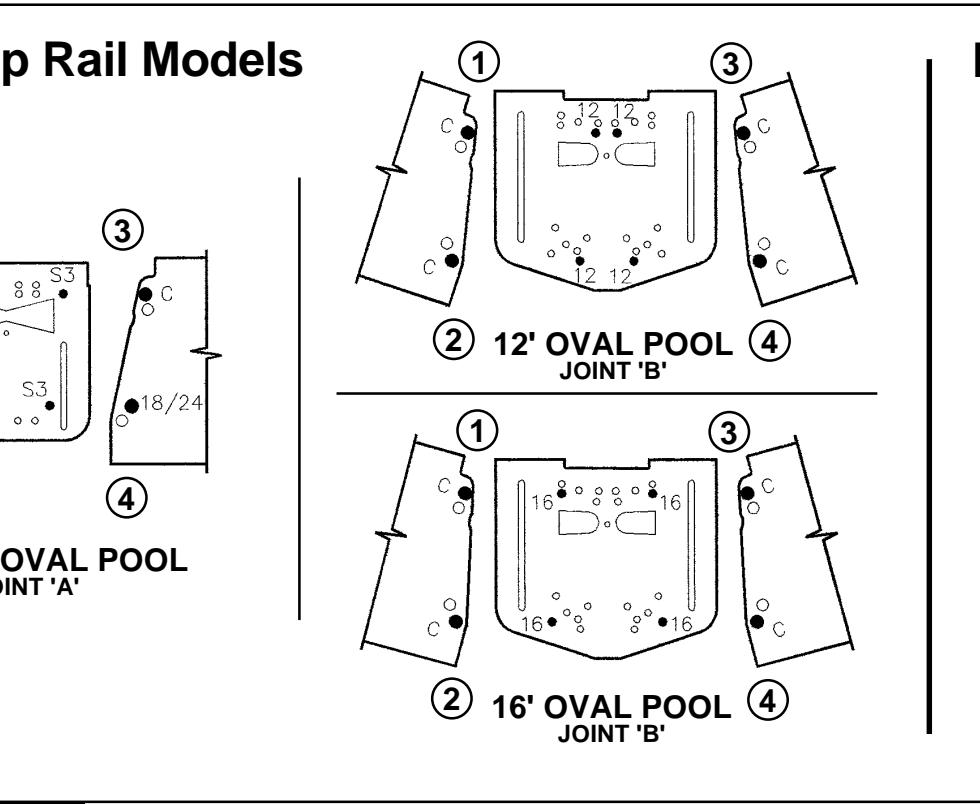


- 12' wide pools use one common size top rail.
- 16' wide pools use two sizes of top rails. The shortest rails are used between the side verticals.
There are two different joints where the top rails meet for both 12' and 16' wide pools as shown above. Refer to Step 22 for the correct attachment locations.

22 INSTALL TOP RAILS

Each pool size has a specific hole pattern for mounting the top rails to the vertical end caps. Use the figure that matches your pool series, size, and the accompanying chart to locate the correct mounting holes.
HELPFUL SUGGESTION: Use a felt pen to mark the proper holes before you assemble the top rails to the vertical end caps.
Use four #10 x 3/8" screws to attach the top rails to each vertical end cap. From the chart, select the proper holes in the vertical end caps and top rails (stamped into the top rails and end caps). Insert screws through the correct holes in the top rails and screw into the proper holes in the vertical end caps. Joint "A" is used for the side junctions and Joint "B" is used for the end and transition junctions (refer to Step 21).
Example — 16' x 32' pool
Hole areas 1 and 2 are toward inside pool. Areas 3 and 4 are toward outside of pool.
To attach top rails to end cap in Joint "A" for area 1, insert screw through hole in top rail marked "C" and screw into hole stamped "S3" in end cap.
For hole area 2, insert screw through hole in top rail marked "18/24" and screw into hole "S3" in end cap. For hole area 3, insert screw through hole in top rail marked "C" and screw into hole "S3" in end cap. For hole area 4, insert screw through hole in top rail marked "18/24" and screw into "S3" in end cap.

Steel Top Rail Models. HOLE CHART FOR 6" TOP RAIL MODEL OVAL POOLS. Table with columns for Pool Widths (12' and 16') and Joint types (A and B). Rows list Top Rail and End Cap hole patterns.



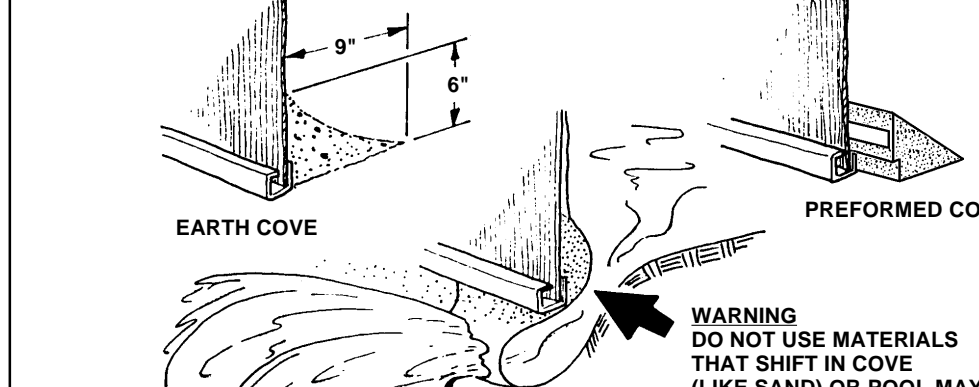
23 ATTACH TOP CONNECTORS

Steel Top Rail Models: Attach top connectors to the pool. Install inner connectors first using the screws provided. The outer connector slides over the inner connector. Secure with all hardware and L-brackets shown in the detail of your pool. Refer to Fig. C. **Helpful Tip:** Fasten the L-bracket loosely to the bottom of the outer connector prior to sliding the outer connector over the inner connector. With outer connector in place, fasten the L-bracket to the vertical.
Resin Top Rail Models: Prior to installing the top connectors, assemble the L-brackets to the vertical end caps and verticals using the hardware provided. Attach top connectors to pool by lowering them over the end caps, and aligning their inside locating tab with hole in vertical end cap. Push top connector down firmly to snap it into place over the top rails (no fastening hardware is required to secure the top connector). Refer to Fig. D.

24 CHECK WALL RADIUS

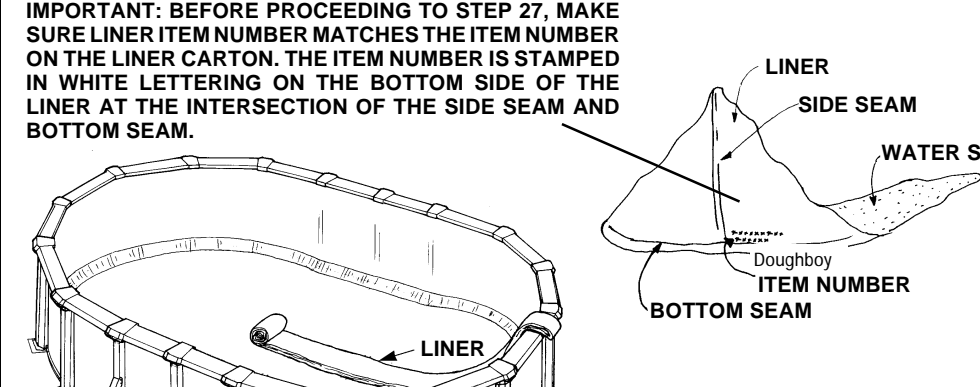
Important Step: At this time, fill in all excavations on outside of pool. Cover inside pressure pads, tension straps (strap pools only) and horizontal beams with approximately 3" of damp sifted earth; tamp and blend to bottom of pool. Check pool framework to assure level installation. Place the level on each top rail, working gradually around pool, to assure framework is on flat ground with opposite sides no more than 1 inch out of level. **Remember: Always remove dirt to adjust framework - never fill in!** Use level to check straightness of verticals. Using Stake A as center point, measure from stake to pool wall to assure roundness of ends. Measure to left wall, right wall, and to each connector at pool end. Distance should be equal at all points. Follow same procedure using Stake B as center point for opposite end.

25 COVE



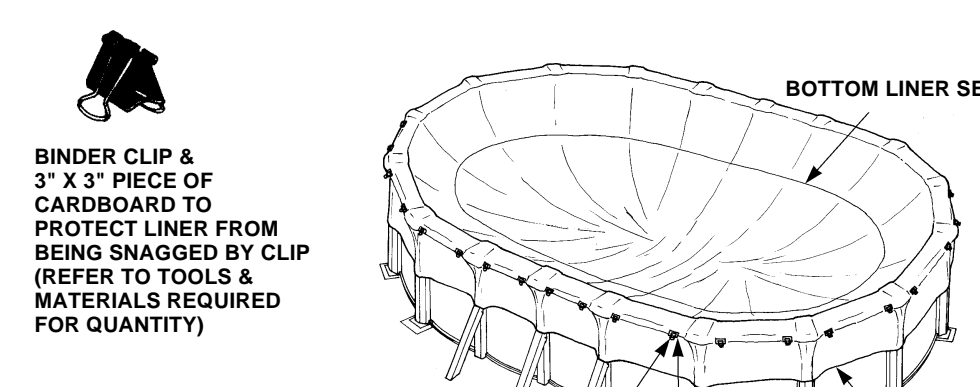
Important Step: The cove is a vital structural element that prevents water pressure from forcing the pool liner out under the bottom rail. The manufacturer will not assume responsibility should the cove be omitted.
EARTH COVE: Use screened damp earth to form a cove around the inside base of pool wall. Shape and compact firmly.
PRE-FORMED: Specifically designed pre-formed pool cove is available from your dealer. Follow cove manufacturer's instructions. **Recheck pool for roundness after installing cove.** NOTE - Strap pools only: Make certain straps are completely covered with sifted earth.

26 LINER SEAM POSITIONING



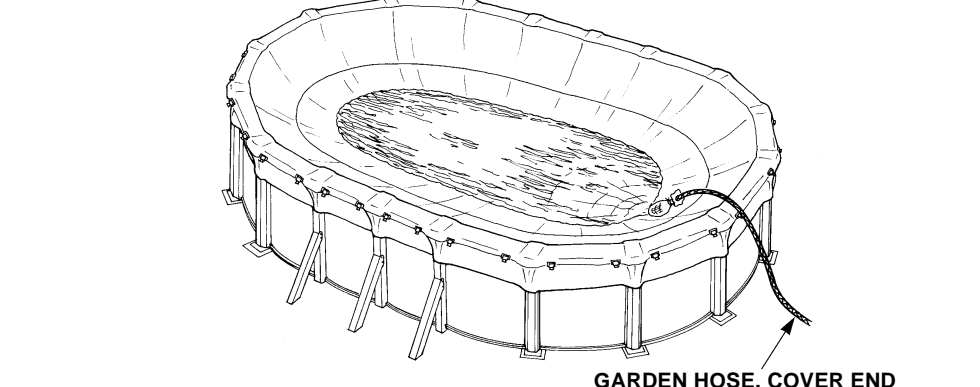
IMPORTANT: BEFORE PROCEEDING TO STEP 27, MAKE SURE LINER ITEM NUMBER MATCHES THE ITEM NUMBER ON THE LINER CARTON. THE ITEM NUMBER IS STAMPED IN WHITE LETTERING ON THE BOTTOM SIDE OF THE LINER AT THE INTERSECTION OF THE SIDE SEAM AND BOTTOM SEAM.
Remove all stakes. Check the pool floor (area inside pool wall) for levelness. Fill in all slight depressions with sifted earth and tamp. Remove all stones and sharp objects. Fill in all footprints on pool floor. Place liner on top of top rail. The loose end should overhang outside of pool by about 12 inches. Hold end and unroll liner down middle of pool as you would a carpet. Do not place liner side seam over skimmer or return fitting opening. The center seam of the liner must be positioned at the center line of the pool.

27 INSTALL LINER



Work in both directions from the point where the liner is overhanging. Unfold liner, drape over the top rail and down the sides approximately 24 inches. The liner should be barely above the pool floor in the center ONLY. Remember that the center seam of the liner must be positioned at the center line of the pool. The bottom edge seam of the liner should be inside the pool about 12 inches from the top rails. Correct any bunching or pleating conditions in the liner wall. Inspect liner for open seams. If found, return to dealer for prompt replacement of liner.

28 FILL POOL

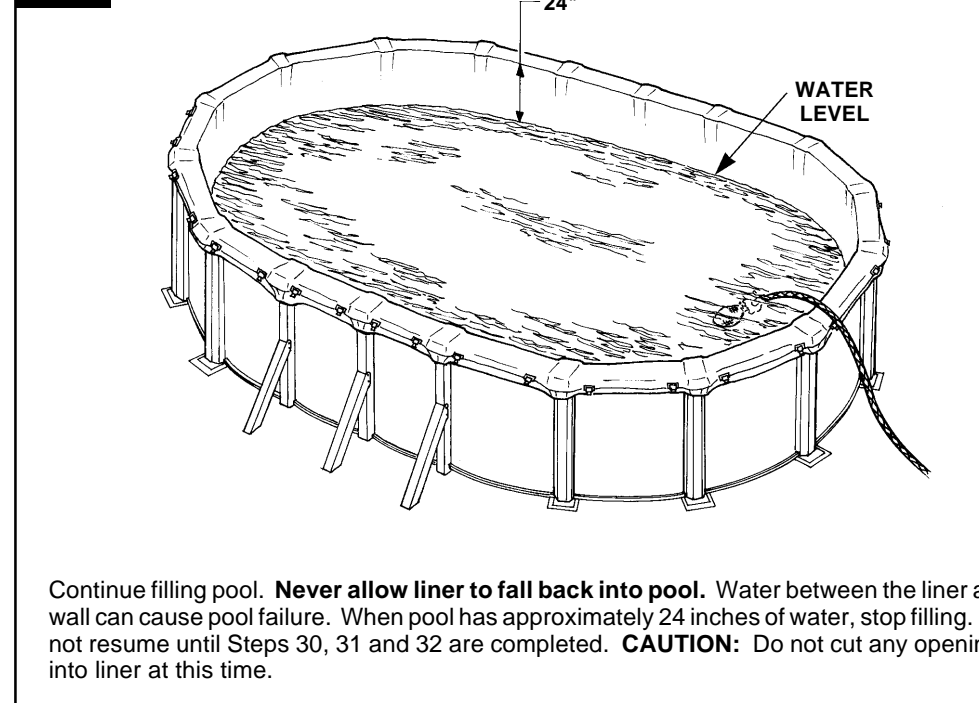


With the liner in position, hold in place by attaching two binder clips over folded cardboard on the underside of each top rail. Carefully cover the end of a garden hose with a sock and tape securely as shown, place it in the pool and begin to fill. As pool fills, the liner will stretch as the water begins to cover the bottom. At this time, check the sidewall for extreme tautness. **Binder clips do not self-release.** Any area that feels tight should be relieved by releasing the binder clips and allowing the liner to feed back into the pool until the desired tautness is achieved. Re-clamp binder clips before you proceed around the pool checking and re-clamping. Remember that you are monitoring a minimum tightness of liner over rail that will control the liner seating itself against the pool floor and up the side with no wrinkles. Continue monitoring the liner tension as the water is approaching and covering the cove area of the pool.

28 con't

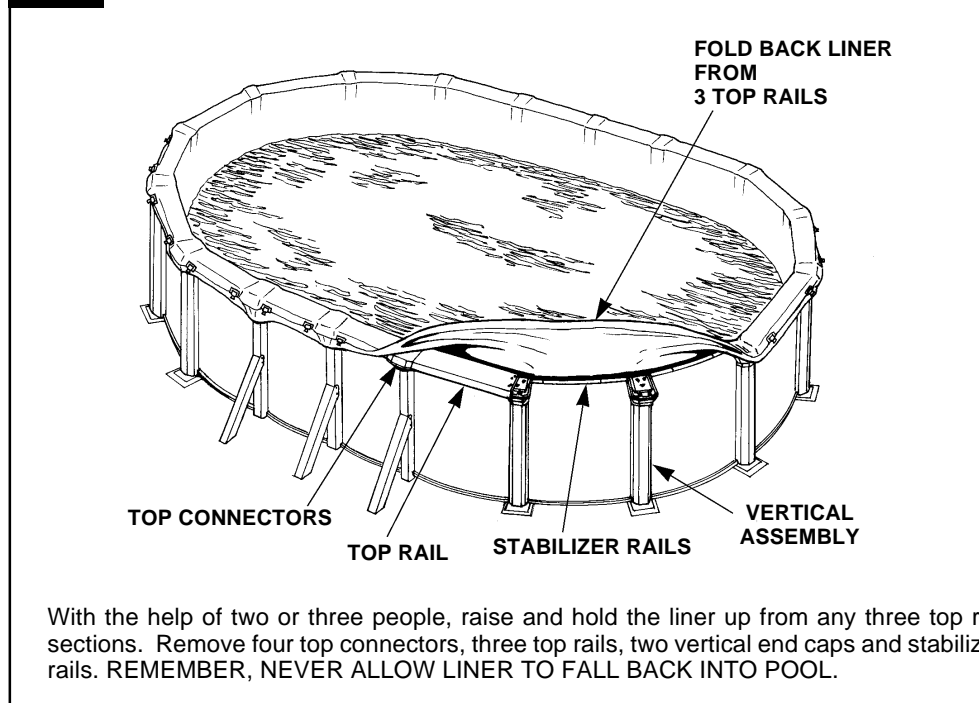
Be sure the liner is evenly distributed over the rail without any bunching or pleating. If this occurs, correct as you are adjusting the liner tension. To correct, grasp the liner wall nearest the wrinkled area. Pull and lift the liner wall just enough to stretch out wrinkles or pleats. It is easier if you wait until there is 1 to 2 inches of water over the wrinkled area before you try to remove it. This allows the weight of the water to hold liner flat on the ground, keeping out wrinkles after you remove them. Pull any excess liner over the rail and reclamp in position so that a minimum tautness prevents further wrinkling. Double check around the pool so that you have an even tension on the liner wall down to the liner floor. Do not attempt to lift and pull the liner with more than 4 inches of water in the wrinkled area. Damage to the liner may occur.
When the water is approximately 6 inches up the metal wall and covering the cove, there should be just barely enough tension on the liner to control a virtually wrinkle-free installation.
Filling Deep Excavated Pools:
It is important to remember that the floor of the liner (not the liner wall) must stretch into the excavated area. The bottom edge seam should be located in the cove area all the way around the pool when the pool is full of water. Stretch the liner properly or you will end up with the bottom edge seam somewhere on the bottom of the pool and not enough liner wall to go over the steel wall to complete the installation. When this happens, you may think you've received the wrong liner, when in fact the liner was improperly stretched into place.

29 CONTINUE FILLING POOL



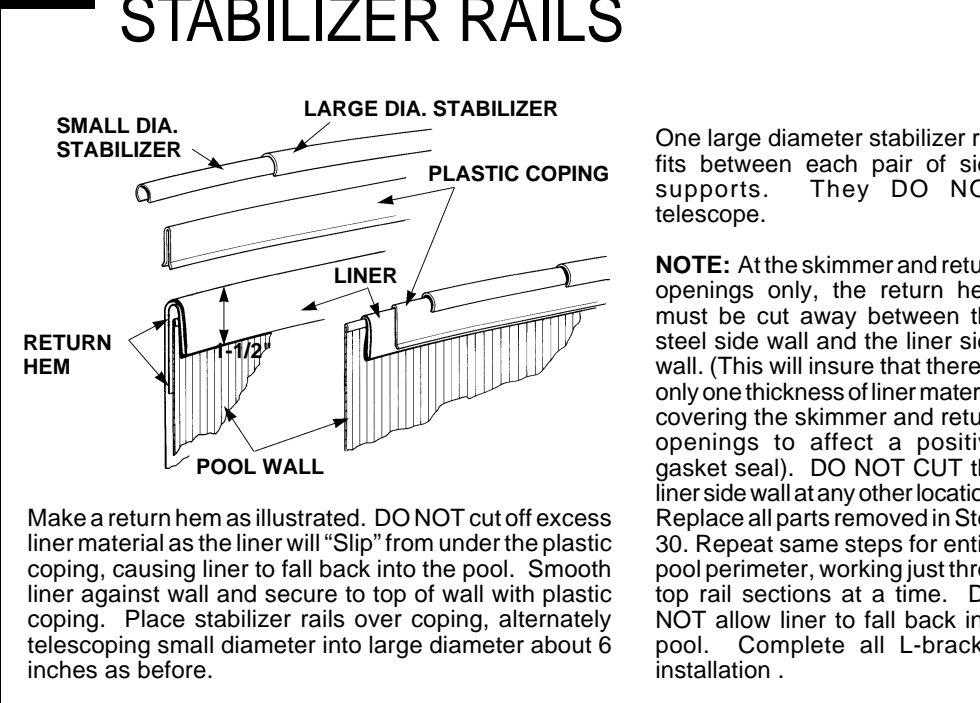
Continue filling pool. **Never allow liner to fall back into pool.** Water between the liner and wall can cause pool failure. When pool has approximately 24 inches of water, stop filling. Do not resume until Steps 30, 31 and 32 are completed. **CAUTION:** Do not cut any openings into liner at this time.

30 PROCEDURE TO ATTACH LINER



With the help of two or three people, raise and hold the liner up from any three top rail sections. Remove four top connectors, three top rails, two vertical end caps and stabilizer rails. **REMEMBER, NEVER ALLOW LINER TO FALL BACK INTO POOL.**

31 INSTALL COPING AND STABILIZER RAILS



Make a return hem as illustrated. **DO NOT** cut off excess liner material as the liner will "slip" from under the plastic coping, causing liner to fall back into the pool. Smooth liner against wall and secure to top of wall with plastic coping. Place stabilizer rails over coping, alternately telescoping small diameter into large diameter about 6 inches as before.

32 LITERATURE • WARNINGS • SIGNS

READ ME FIRST. WARNING: NO DIVING! Shallow water. You can be permanently injured. DEEPER AREA: Shallower near the wall. SHALLOW 3 1/2 FT.

WARNING: NO DIVING! Shallow water. You can be permanently injured. PREVENT DROWNING: Watch children at all times. RESCUE. If any of your safety literature, signs or decals become lost or damaged; you can get more free by contacting Doughboy's Customer Service Department: Doughboy Recreational • 10959 Jersey Blvd. • Rancho Cucamonga, CA 91730-5194. Important: Above-ground pools are designed for swimming and wading only. Do not Dive or Jump! Misuse of your pool may result in crippling injury and/or other dangers to life and health. Do not use slides, diving boards, or any other platform or object which can be used for improper pool entry. Use only an above-ground swimming pool ladder to enter or exit your pool. It is the pool owner's responsibility to secure the pool against unauthorized, unsupervised or unintentional entry. It is also the pool owner's responsibility to warn all pool users of the hazards of diving into shallow water; paralyzing injury may result. Always obey all safety rules. Remember, pool safety is everybody's responsibility. Change of Design: Doughboy Recreational expressly reserves the right to change or modify the design and construction of any product in due course of our manufacturing procedures, without incurring any obligation or liability to furnish or install such changes or modifications on products previously or subsequently sold.