



Pool Power Pak® I

Timer Models: 0-1063-020, 0-1064-020,
0-1065-020, 0-1066-020 with 25 Ft. Cord

Timer Models: 0-1063-026, 0-1064-026,
0-1065-026, 0-1066-026 with 3 Ft. Cord

Owner's Guide



PREPARATION

IMPORTANT SAFETY INSTRUCTIONS

FOR ALL MODELS:

When installing and using this electrical equipment, basic safety precautions should always be followed, including the following:

1. **READ AND FOLLOW ALL INSTRUCTIONS.**

2. **WARNING:** To reduce the risk of injury, do not permit children to use this product unless they are closely supervised at all times.

3. **WARNING:** Risk of electric shock. Connect only to a grounding type receptacle protected by a Ground Fault Interrupter (GFCI). Contact a qualified electrician if you cannot verify that the receptacle is protected by a GFCI.

4. Do not bury cord. Locate cord to minimize abuse from lawn mowers, hedge trimmers, and other equipment.

5. **WARNING:** To reduce the risk of electric shock, replace damaged cord immediately.

6. **WARNING:** To reduce the risk of electric shock, do not use an extension cord to connect unit to the electrical supply; provide a properly located outlet.

FOR MODELS 0-1063-020, 0-1064-020, 0-1065-020, 0-1066-020 (25 Ft. Cord)

7. **CAUTION:** This pump is for use with storable pools only. Do not use with permanently installed pools. A storable pool is constructed so it may be readily disassembled for storage and reassembled to its original integrity. A permanently installed pool is constructed in or on the ground or in a building such that it cannot be readily disassembled for storage.

FOR MODELS 0-1063-026, 0-1064-026, 0-1065-026, 0-1066-026 (3 Ft. Cord)

8. **CAUTION:** This pump is for use with permanently installed pools and may also be used with hot tubs and spas if so marked. Do not use with storable pools. A permanently installed pool is constructed in or on the ground or in a building such that it cannot be readily disassembled for storage. A storable pool is constructed so that it may be readily disassembled for storage and reassembled to its original integrity.

FOR ALL MODELS:

9. SAVE THESE INSTRUCTIONS.

ELECTRICAL SOURCE

FOR MODELS 0-1063-020, 0-1064-020, 0-1065-020, 0-1066-020 (25 Ft. Cord)

Your pump is supplied with a 25 foot, 3-wire electrical cord and a 3-pronged plug. The pump is double insu-

lated and grounded. The pump electrical cord must be connected to a grounded, 3-wire, 115 VAC electrical receptacle.

The pump should be connected to a receptacle on a dedicated circuit protected by a 20 AMP circuit breaker. **DO NOT** use a grounding adaptor.

The receptacle must be protected by a Ground Fault Circuit Interrupter (GFCI) in accordance with Article 680-31 of the National Electrical Code (NEC), (Section 68-204 of the Canadian Electrical Code (CSA) and local codes or ordinances. For runs greater than 25 feet, consult your local licensed electrical contractor.

FOR MODELS: 0-1063-026, 0-1064-026, 0-1065-026, 0-1066-026 (3 Ft. Cord)

Your pump is supplied with a 3-foot, 3-wire electrical cord and a 3-prong flanged, twist-lock plug. The pump electrical cord must be connected to a single twist lock, grounding type receptacle that is located a minimum of 5 feet from the inside pool wall.

A qualified electrical contractor must install this receptacle in accordance with Article 680-6 of the National Electrical Code (NEC). A Ground Fault Interrupter (GFCI) must be used. An ON/OFF Switch must be installed at the receptacle.

Use a Hubbell No. 2310 Receptacle, 20 AMP 125 Volt A.C. or an equivalent receptacle that meets NEMA Configuration L5-20R.

This pump is double insulated and grounded. Dead metal parts are not in contact with pool water.

CAUTION

1. DO NOT install the pump on a deck, it could fall into the water, causing severe electrical shock. Do not install on any surface at, above, or slightly below the top rail of the pool.
2. DO NOT allow children or adults to climb, sit, or stand on the pump unit. They could easily fall. Position the filter and pump approximately 4 feet from the pool wall so they may not be used as steps by children.
3. Always keep the water level in your pool between the water level markers on the skimmer face plate. If the pump is run with water level too low, the pump seal may overheat and cause permanent damage to the pump.
4. Your Pool Power Pak must sit either in an optional filter/pump base, on a patio block, or on any firm surface that slightly elevates the pump off the ground. This keeps water away from the motor and prevents the vents of the Power Pak from becoming blocked, which could cause the motor to overheat.

STRAINER ASSEMBLY INSTALLATION

Sequel I Plus or Silica I Plus - The Strainer Assembly is packed with the filter. Refer to your Sequel I Plus or Silica I Plus Owner's Guide to learn how to install the

Strainer Assembly on the Pool Power Pak I - The male hose adaptor (1) provided with your Power Pak is not required when a Strainer Assembly is installed on the pump.

Skim Line Filter - Strainer Assembly is optional. If not used, then screw the male hose adaptor (1) into the threaded suction port of the pump volute (3) and tighten firmly. This adaptor must be installed if no Strainer Assembly is used.

INITIAL START-UP

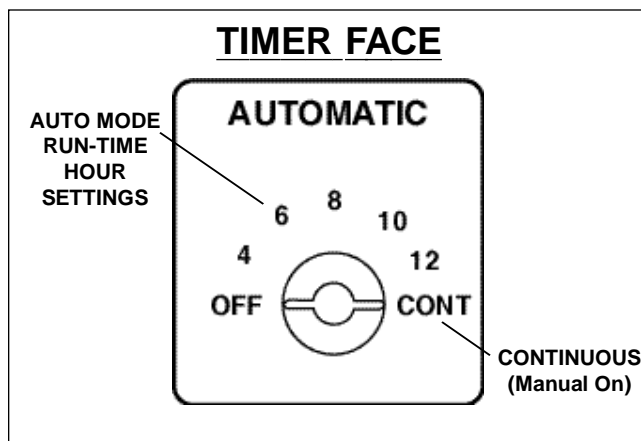
1. If you have a Doughboy filtration system, follow the "Initial Start-Up" instructions in the Doughboy Filter owner's guide.
2. If this pump has been purchased as a replacement (and you are not referring to the Doughboy Filter instructions), the pump will have to be primed after all hose connections have been made and pool has been filled to the proper level. To prime the pump, loosen the pump strainer pot lid to allow air to escape. Tighten lid when water begins to flow between strainer pot body and lid. Do not overtighten.

TIMER OPERATION

To access the timer, lift the timer cover at rear of pump.

AUTO SETTING:

This pump is equipped with an automatic timer which has three modes of operation: "OFF," "AUTO" and "CONT." In automatic mode, there are five lengths of run-times to choose from: 4, 6, 8, 10, or 12 hours.



To operate the pump in the automatic mode, select the run-time (in hours). The timer operates on a 24 hour cycle which starts when the pump is plugged in ("start-time").

After plugging in the pump, the pump will run for the number of hours selected, then shut off automatically. The pump will automatically start again 24 hours from the time it was plugged in ("start-time").

Example (the current day and time is Saturday, 8:00 a.m.):

1. Select 6 hours running time with the timer knob.
2. Plug pump in and pump will start.
3. Pump will shut off at the end of six hours (2:00 p.m.).
4. Pump will turn on automatically the following day (Sunday), 24 hours from the time it was plugged in (8:00 a.m.).
5. In our example, the pump will start every day at 8:00 a.m., and shut off every day at 2:00 p.m.

MANUAL SETTINGS:

To operate the pump with the manual settings, set the switch in either the "OFF" or the "CONT" position.

Selecting the "CONT" position allows you to run the pump continuously for functions such as vacuuming or extended filtering.

Selecting the "OFF" position cuts power to the motor. Selecting "OFF" will also reset the "start-time" and cycle you selected by plugging in the pump.

Example: Using same day and time, the pump has run from 8:00 a.m. until 10:00 a.m. and has four hours remaining in the 6 hour cycle:

1. Switch pump "OFF" at 10:00 a.m. and leave it off until 11:00 a.m. (one hour).
2. Switch pump back to 6 hour setting at 11:00 a.m. Pump will start and run for 6 hours, then shut off automatically at 7:00 p.m.

TO CHANGE THE LENGTH OF TIME THE PUMP WILL RUN:

Turn the timer knob to the new hour selection desired (you do not need to switch pump off).

Examples:

1. **The switch is on a run-time hour setting (4, 6, 8, 10 or 12), but the pump is not running:** Any newly selected time length will take effect the following day at the regular "start-time".
2. **The switch is on a run-time hour setting (4, 6, 8, 10 or 12), and the pump is running:** If the new selected time length is shorter than the current time length, the pump will shut off according to the new selection.
3. **The switch is on a run-time hour setting (4, 6, 8, 10 or 12), and the pump is running:** If the new selected length of time is longer than the current length of time indicated, the pump will continue running and shut off after the new selected length of time.

TO CHANGE THE TIME THE PUMP WILL START:

There are two methods to reset the start time in auto mode (switch set to a run-time hour).

1. To change the time that the pump will start, unplug the pump. Plug the pump back in at the desired start time. You must wait a minimum of 30 seconds between unplugging and replugging.
2. Turn the switch to the "OFF" position and then back to a run-time hour setting. The new run-time will begin immediately and complete the run-time cycle.

NOTE: In the event of a power failure, the timer will act as though it has been unplugged, then replugged when power is restored. In the auto mode, the pump will start running its cycle when power is restored. You will have to reset your "start-time" by unplugging the pump, then replugging it at your desired "start-time", or follow method two above.

MAINTENANCE

Make sure the pump is disconnected from the electrical source before attempting any maintenance work.

LUBRICATION

Periodically lubricate the O-Ring under the strainer cover with a NON-PETROLEUM lubricant recommended for A.B.S., Noryl and Acrylic plastics. Consult your pool dealer for lubricant selections.

If you have any questions or require assistance, contact your Doughboy pool dealer.

SERVICING SAFETY TIPS

1. **ALWAYS TURN "OFF"** the main power switch and the Ground Fault Circuit Interrupter (GFCI) breaker switch so power is completely off before servicing your unit.
2. **ALWAYS BE SURE THE GROUND UNDER YOUR FEET AND YOUR BODY IS DRY** before you touch electrical equipment. Failure to heed this warning may cause personal injury due to severe electrical shock.
3. **ALWAYS** have a qualified electrician service your system if electrical problems occur. This system uses UL listed components and must be serviced by a qualified electrician to insure that the electrical integrity is maintained. Failure to do so may cause personal injury due to severe electrical shock.
4. **ALWAYS** have a qualified electrician install a Ground Fault Circuit Interrupter (GFCI) breaker at the electrical service or supply panel. Follow GFCI manufacturer's operating instructions for testing. Failure to do so may cause personal injury due to severe electrical shock.

CAUTION: To reduce the risk of electrical shock, connect only to grounding type receptacles. A Ground Fault Circuit Interrupter (GFCI) must be provided in accordance with local codes or ordinances.

CAUTION: To reduce the risk of electrical shock, use only Original Equipment Manufactured (OEM) replacement parts when servicing.

PARTS LIST

ITEM	P/N	QTY	DESCRIPTION	ITEM	P/N	QTY	DESCRIPTION
1	340-1778	1	Male Hose Adaptor	16	348-1026	2	Rubber Strip
2	330-1016	6	#8 x 1" Phillips Screw	17	1150-1000	1	Bottom Housing Assy.(-020 Models)
3	305-1010	1	Pump Volute		1150-1005	1	Bottom Housing Assy.(-026 Models)
4	308-1005	1	O-Ring Seal	18	330-1023	10	#8 x 5/8" Screw
5	1107-1143	1	Impeller Assy. w/seal, 1/3 HP	19	1100-1118	1	Cord Set Assy, 25'(-020 Models)
	1107-1142	1	Impeller Assy. w/seal 1/2 HP		1100-1115	1	Cord Set Assy, 3' (-026 Models)
	1107-1141	1	Impeller Assy. w/seal 3/4 HP & 1 HP	20	303-1104	1	Strain Relief Bushing (-020 Models)
6	1121-1577	1	5/8" Pump Seal Set		303-1120	1	Strain Relief Bushing (-026 Models)
7	308-1263	1	Pump Seal Seat	21	1121-1776	1	Top Housing/Decal Assembly.
8	308-1264	1	5/8" Pump Seal	22	1100-1117	1	Jumper Wire - Black
9	1121-1582	1	Pump Faceplate Assy.	23	1100-1116	1	Jumper Wire - White
10	300-1015	1	Motor, 1/3 HP	24	1121-1777	1	Timer Cover/Decal Assembly
	300-1016	1	Motor, 1/2 HP	25	340-1645	1	Timer Body
	300-1017	1	Motor, 3/4 HP	26	308-1106	1	Face Gasket
	300-1043	1	Motor, 1 HP	27	308-1107	1	Body Gasket
11	385-1152	2	Motor Clamp	28	340-2341	1	Timer Mounting Bracket
12	321-1004	1	1/4"-20 Hex Nut	29	340-2344	1	Timer Knob
13	324-1018	1	1/4"-20 x 1" Bolt	30	1100-1690	1	Timer Module Assembly
14	341-1123	1	Insulating Sleeve	31	330-1285	1	#8 x 1-1/2 Screw
15	1121-1583	1	1/3 HP Pump Assy.	32	343-1074	1	Switch Hole Cover Plug
	1121-1584	1	1/2 HP Pump Assy.	33	327-1036	1	#8 Ext. Tooth Lockwasher (not shown)
	1121-1585	1	3/4 & 1 HP Pump Assy.	34	365-1878	1	Owner's Guide
				35	—	1	Warranty Card

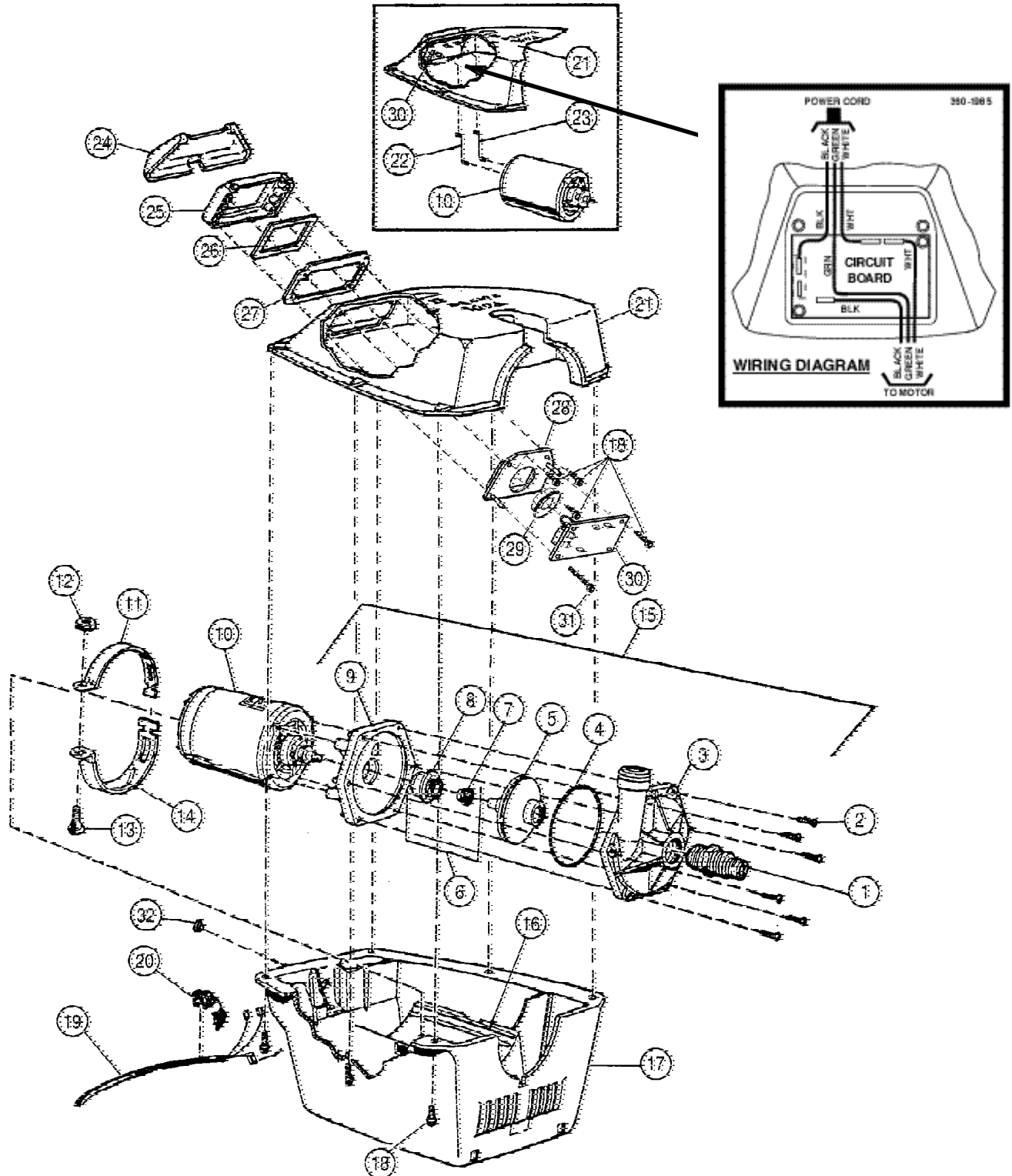
POOL POWER PAK I® TIMER MODELS - EXPLODED VIEW

Models With 25 Ft. Cord:

0-1063-020, 0-1064-020, 0-1065-020, 0-1066-020

Models With 3 Ft. Cord:

0-1063-026, 0-1064-026, 0-1065-026, 0-1066-026





Change of Design: Doughboy Recreational expressly reserves the right to change or modify the design and construction of any product in due course of our manufacturing procedures, without incurring any obligation or liability to furnish or install such changes or modifications on products previously or subsequently sold.



DOUGHBOY RECREATIONAL • 10959 Jersey Blvd., • Rancho Cucamonga, CA 91730
Visit our web site at www.doughboy-pools.com